

# OPRA Fete Special

All  
Welcome

## Combwich Fete Saturday 3rd July 2–5pm

This year the Fete will be held on the grassed area between the Village Hall and the Anchor and adjacent to the Children's' Playground. We have a great programme starting at 2pm with a Children's' Fancy Dress competition, Aldo the Clown, The Nelson School of Dancing, Fortune Teller, Skittles, Test Your Strength, Bouncy Castle, Candle Making and many more attractions. There will be stalls of every variety, a licensed bar (provided by the Anchor) and cream teas and BBQ.

### Family Disco

In the evening a Family Disco will be held in the Village Hall at 7pm. Entrance is free to all ages. Soft drinks and something stronger for the adults will be available from the Social Club. There will also be a BBQ from 8-9pm.

### Can You Help?

Donations are required for various stalls. If you can help please contact the following (or any member of the committee) to arrange collection.

Books, Liz Sidebotham 653028

Plants, Elaine Last 653059

Cakes, Elizabeth Marriott 653308

Bric a brac, Robert Palmer 653464

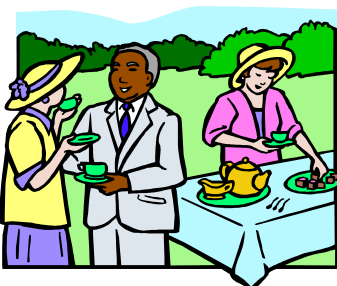
Silent auction and prizes for the tombola.

(Robert has agreed that small items can be left at the Post Office)

**Volunteers** are also required to staff various stalls and to help set up the event. If you can help please contact a member of the committee.

Please remember all the proceeds from the Fete will be used to enhance the village and community life.

**Fete Draw** Tickets are now available and someone will be calling on you soon. There is a £100 cash first prize plus many others. Please support the Village Fete



### Parking

Visitors arriving by car for the Fete will be directed up Church Hill, down Ship Lane and on to the Common which will be the official car park. It would be very helpful if villagers who normally park their cars on Riverside adjacent to the common would kindly park elsewhere just for the duration of the Fete from about 1pm until 5pm. This will enable us to get essential vehicles to the site. Your help will be very much appreciated.

Otterhampton  
Parish Recreation  
Association

Registered Charity No  
1124017

### OPRA Trustees

#### Chairperson

Robert Palmer 653464.

#### Secretary

Ann Leathwood 652399.

#### Treasurer

Sue Francis 653663.

#### 100 Club Organiser

Lyn Standerwick 653464

Tina Gardener 652642

Liz Sidebotham 653028.

Jess Whyte 651072.

Barry Leathwood 652399

### Fete Photography

If you want that special photo of your child or pet then this is your chance. Within minutes you can have a mounted 9"x6" (15x23cm) photo to take home with you



**Terry Linden** local professional photographer will be available to take your pics at a specially discounted rate of £5.