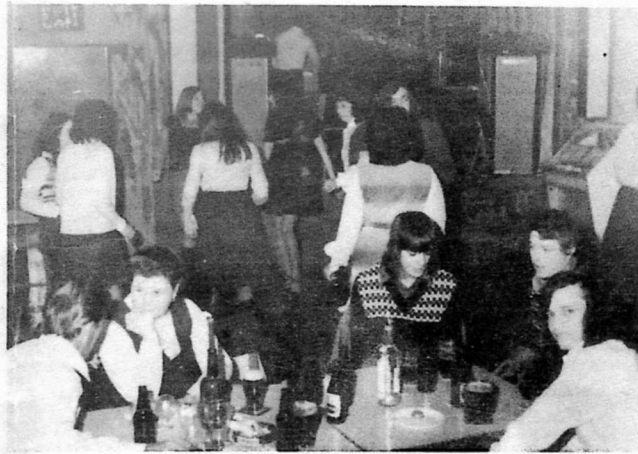


Combwich Clarion



WHETHER RELAXING OR DANCING
YOU'VE GOT TO ADMIT



EDITORIAL

Hello again, everybody – it's lovely to be back in print! Probably many of you thought you would never see the Clarion again – to be quite honest, I did have my doubts too!

The printing problems stemmed from the three day week – if you can remember that far back – and the poor Clarion never recovered.

I hope there is something for everyone in this issue, if not, well you know the address 14 ESTUARY PARK, so go ahead and send in suggestions. Printable please!!!

Now the evenings are drawing in, many of us are restricted to entertainment at home – watching the heating and lighting bills go up! The Social Club Committee has done something about this, on Saturday nights at least, with the free Saturday Night Socials. It costs you nothing to go and if you want to buy a drink, refreshments or Bingo Card, well, that's up to you. Music is provided throughout the evening. I feel this is a marvellous venture because it is open to all – you do NOT have to be a Social Club member. So go along next Saturday and give it a whirl!

'Saturday Night at the Hall' a great SUCCESS!

The brain-child of Mike Sperring, sold by him to the Social Committee and enthusiastically carried through, "Saturday Night at the Village Hall" has settled down to a long run as a good night out for the Village. Paid for by profits from the weekly draw, "Saturday Night" has a potted Bingo Session, and cross-the-board music supplied by Kevin Crocker – you should see those middle-aged swingers! If you haven't been down there on Saturday Night, you haven't lived.

SOCIAL NEWS

SOCIAL CLUB COMMITTEE

As most of you know, the general management and day-to-day running of the Village Hall is looked after by the Management Committee. The upkeep and costs of the Village Hall are, of course, considerable and in order to increase revenue, the Social Club Committee was formed to be a fund raising body for the Village Hall.

With our present programme and the approach of the Christmas period, we are greatly in need of more helpers. If you are a member of the Social Club, have some time to spare and especially if you have some ideas for dances, concerts, whist drives or any other activity that might interest the Village and, incidentally, raise some money, won't you please join us? We meet in the Village Hall at 9 p.m. on 1 (sometimes 2) Friday's in the month. Our next meeting is the 20th December. Please come along, you will be welcomed by everyone.

These are the activities in which we are at present engaged.

YOUTH CLUB - Tuesday's 7.30-9 p.m.

We provide the adult supervision at the Youth Club and are at present trying to find ways and means of providing them with more games and activities to fill their time. If you can help in any way, please let us know.

A group of the boys and girls are hoping to visit all parts of the Village to sing carols on Monday, 23rd December. They will be collecting for Youth Club funds and we hope you will bear this in mind when they call on you.

The Youth Club will be closed for 3 Tuesdays - 17th, 24th and 31st December.

BINGO - Friday's 8-9 p.m.

We run a Bingo Session every Friday. We can't compete with the big Bingo Halls, but the cost is low - just 15p for 6 houses. You can have a drink from the Bar and you can be sure of a friendly welcome.

ENTERTAINMENTS CLUB WEEKLY DRAW

Many of you are already contributing to this scheme, which for 10p a week offers a £10 prize every week and a £100 prize on the 20th week. A few tickets are still unsold, please let us know if you would like to take part. This venture provides the funds for:-

SATURDAY NIGHT SOCIALS WITH MUSIC

We have been delighted to see so many of you on Saturday evenings and when you come again and again, it is very gratifying. Those of you who haven't yet come to the Hall on a Saturday evening, why not join us this week. The music starts at 8 p.m. and carries on until 11.40 p.m. The Bar is open until 11 p.m. We have an interval for Bingo about 9.30-9.45 p.m. With your continued support, we are hoping to provide other entertainment in the near future.

CHRISTMAS EVE

A Christmas Draw has been arranged and tickets are on sale in the Hall now. The Draw will take place in the Hall during the Christmas Eve festivities. Music will be played from 8 p.m. and a Bar extension has been applied for. All the Ladies will have been busy preparing for Christmas Day, so why not bring them along to the Hall to relax and get away from the kitchen.

BOXING DAY

Music will be played in the Hall at lunch-time so why not come along and join in the traditional games of Skittles.

More music in the evening and another Bar extension applied for. A party at home means a deal of clearing up next day. If you come to the Hall and join the fun there, you can lie in next morning with a clear conscience.

CHILDREN'S PARTY

On Monday, 30th December from 3-6 p.m. we are holding a party for all children of school age. There will be tea and games, Father Christmas will be visiting us and we have arranged for a magician to come along to entertain the children. A photographer will also be present. **PLEASE DO ADD YOUR CHILDREN'S NAMES TO THE LIST**, which you will find on the Notice Board in the Bar - before 14th December please. If you haven't a child to send along, why not come yourself? We'd be glad of your help and judging by last year's party, we can promise you a good time.

NEW YEAR'S EVE

Come and join us to see the Old Year out and the New Year in. There will be music from 8 p.m. and a Bar extension has been applied for.

Thank you!

The Social Club Committee would like to thank everyone for their generous support over the past year and hope that you will be as patient with us in the coming year each time we approach you asking you to buy Dance tickets, raffle tickets, and the dozen other ways in which your help is requested. We cannot make it too clear how greatly your support is appreciated and needed.

We wish you all the happiest of Christmas's. We hope to see many of you in the Village Hall over the holiday period and we wish each and everyone of you a Prosperous and Healthy New Year.

£10 winners so far *

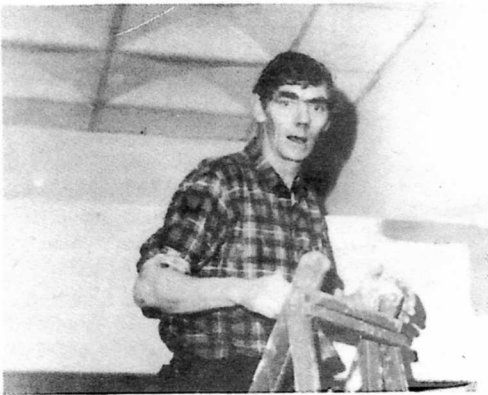
12th October	No.867	G. Taylor
19th October	No.271	M. Walford
26th October	No.112	Mrs. Y. Knight
2nd November	No.545	J. Francis
9th November	No.600	Miss E. Perrett
16th November	No.229	J. Peace
23rd November	No.574	A. Case
30th November	No.699	D. McPaul
7th December	No.522	Mrs. Loveridge

STOP PRESS !!

ATTENTION ALL YOUTH CLUB MEMBERS - Please meet upstairs in the Hall at 8 o'clock Tuesday, 17th December, to make our final arrangements for Carol singing. Mrs. Parker.



when father painted the parlour.....



Black shrouds at the ready, armed to the teeth with brushes, rollers, paint, "George", buckets, etc., the Management Committee – or rather SOME of the Committee – descended upon the Village Hall one Sunday. Net result; a brighter, cleaner, more sociable looking hall. C-in-C, Les Wright, spotted from head to toe in purple paint, stood back at 8 o'clock (narrowly missing a bucket of paint and his wife) and declared himself thoroughly exhausted but pleased with the result. Those of you who have been in the hall since will surely echo that verdict. A.D.C., Met Pople, is carrying on the good work – week-by-week – painting the lavatories, stairs, skittle alley, etc.



fashion

FASHION AT THE HALL

As a fund raising venture the ladies of the Playgroup organised a Fashion Show. Clothes supplied by Bidiscombe were shown to full effect by models Mrs Nurton, Mrs Passmore, Jenny Sims, Libby Perry, Jean Kibby, Jenny Davies and Georgina Greenfield, whilst Mrs Myatt gave a splendid running commentary. All the ladies thoroughly enjoyed their evening, and the profits will give the Playgroup children a super party.



BRIDGWATER MERCURY

Village views sought on port revival

The people of Combwich are to be asked for their views on the revival of port facilities in the village.

The move follows an application to Sedgemoor District Council which would lead to 120,000 tons of damp sand being landed there over the next two years.

The application has been made by the Amey Road Stone Corporation which will be engaged on supplying materials for motorway construction.

At a meeting of Sedgemoor's policy and finance committee, members were told that the sand would be discharged into lorries direct from the ship.

Lorries

One cargo would be dealt with every other day and the sand would be transported in 20-ton articulated lorries.

If it were impossible for the company to off-load the sand direct into a lorry, the company would ensure that it was deposited on the quay and that it remained moist.

The lorries would travel from Combwich through Cannington and, via Huntworth, south down the motorway.

Because Combwich is a residential area, the company is prepared to restrict

the hours of working from 7 am to 7 pm, six days a week.

The committee was told that the council would receive about £1,000 a year for the two-year period in port dues.

But, the committee was advised that, if Combwich port is not used within the next 12 months, siltration will prevent commercial use of the port in the future unless substantial dredging works are carried out.

Council officials recommended the committee to allow the company to use the port for a two-year period.

And, if this proved successful, it may be possible to use the port on a long-term basis.

The committee agreed to defer the proposal and to ask Combwich Parish Council for its opinion.

This was because of earlier commitments to obtain the views of the local people before decisions on the port facilities were made.

Public meeting likely over wharf plan

A PUBLIC meeting is almost certain to be called in the Combwich area over the controversial plan to re-open the village wharf.

It will follow discussions to be held this Thursday between Otterhampton Parish Council and Sedgemoor's development and property sub-committee.

The public will not be allowed to attend the meeting, but parish council chairman, Mr Joseph Richardson, said it was the council's intention to call a public meeting.

He said: "There is much divided opinion on the scheme in the village."

The controversy surrounding the use of the dock comes to the fore again with this item of news from our local paper, the Bridgwater Mercury. No doubt the Parish Council will call a Public Meeting, but if they do not, what do YOU, the residents of Combwich have to say about this scheme? Your comments to the Editor please, Jackie Mear at 14 Estuary Park. And to the Mercury, of course.

ACTION CALL ON SCHOOL BURSTING AT THE SEAMS

The application to re-open the wharf has been submitted by the Amey Roadstone Corporation.

To land sand

The company wants to land 120,000 tons of damp sand over the next two years. The sand, for motorway work, will be transported in 20-ton articulated lorries six days a week.

The purpose of Thursday's meeting, which representatives from the company are likely to attend, will be to decide on the best way of consulting the villagers.

The village is apparently split over the proposal and already a petition has been circulated opposing the plan

A PRIMARY school at Combswich is so lacking in facilities that the village chapel has had to be hired for the visit of the school doctor to examine children next month.

Now parents of children attending the Otterhampton County Primary School have banded together to urge Somerset County Council to do something about the situation.

Above all, they want the schoolhouse, which adjoins the school, turned into a library, TV room and staff room. The County Council wants to rent this house to a teacher.

The school, built at the turn of this century, has no staffroom, no office, no private room for medical examinations of sick children or interviews, and the telephone is in the boys' cloakroom.

There is one mobile classroom for 28 five-to-seven-year-olds and two junior class rooms, one of which has 31 children, but only 26 desks.

The school's headmistress for the past 11 years, Miss Emma Sturman, said this week: "The position at the moment is that we are extremely overcrowded".

There are 76 pupils at the school—almost double the average number two years ago.

"The situation has got worse over the past two or three years and I cannot see it getting any better," Miss Sturman said.

"If a parent wants to see me, he has to put up with about 40 children milling around".

Somerset County Council promised a mobile classroom for September, Miss Sturman said, but it has not arrived. Furniture for the classroom has been delivered, however, but there is no proper place available to store it.

Inadequate

The Friends of Otterhampton School, a body formed last week, is pressing for the use of the schoolhouse to provide extra facilities which would improve their children's education.

Secondary school teacher's wife Mrs Valerie Heuch, of Church Hill, Combswich, spokesman for the parents' pressure group, said:

"The school is bursting the seams. More than 70 children are crammed into its inadequate premises. There is no staffroom, no office, the part-time secretary works in a classroom while the children double up in the next one.

The children eat their dinner at the table at which they do their work and now there have to be two sittings for dinner, which makes more work for the kitchen staff".

She said: "The answer would be a new school for the village, but this is probably an impossibility with the current cutback in the amount of money being given to education".

Mrs Heuch continued: "What we would really like to see is the schoolhouse being used to provide the extra facilities".

By NICK WARBOYS

REPRODUCED FROM THE BRIDGWATER
MERCURY BY KIND PERMISSION OF THE
EDITOR



SHAMROCK SENIOR CITIZEN CLUB

On the 19th November, Mr Evans of Stockland, came to the Village Hall and gave us a film show of his holiday in New Zealand. What lovely slides and what a very nice place this must be. Many, many thanks to Mr Evans from us all.

The children of Combwich School are coming to sing to us on the 3rd December. We are looking forward to this occasion as so often Nans and Grandads don't see the children and their work at school.

On Tuesday, 17th December, it is our Christmas Party. All members are invited to a Christmas meal at 7 o'clock and invited friends for an evening's entertainment and running buffet at 8 o'clock. This should be a really jolly occasion. Our first Christmas and one which we hope will be remembered.

On 7th January, '75, our first anniversary, we are all celebrating with a tea in town. Once again we hope this will be an occasion to remember.

Before I close I would like to remind all villagers that our meal service is in operation every other Tuesday and every other Friday. A mini-bus is laid on and it costs 10p for the fare and 15p for a 3-course lunch. This is of course subsidised by the newspaper collection.

Anyone interested in either the Shamrock or the Meal Service please contact,

MRS RICHARDS at 36 Estuary Park, ☎ telephone:
Combwich 786, Or

MRS WRIGHT at 7 Martyn Close, Telephone: Comb-
wich 672.

Why not break up some of those cold wintry days with congenial friends and a happy atmosphere. Shamrock every other Tuesday at 2.30 p.m. in the Village Hall, commencing in the New Year, 7th January 1975.

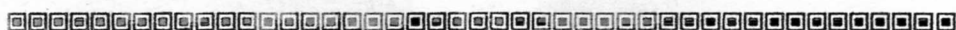
The Gang Show?

WHO'S ENTERTAINING WHOM?

On Tuesday, 3rd December, the multitude descended on the few when the children from Otterhampton CP School tramped down to the Village Hall to entertain the members of the Shamrock Club with a selection of Christmas music. The kids were in for a pleasant surprise too — waiting to entertain THEM was Minehead conjuror, Mr. Hodges, who had them laughing and mystified for an hour or so. After the show, and replenished with drinks and cake, the children sang an extensive concert to their seniors.

A splendid arrangement all round, and the Shamrock Club and Miss Sturman and her staff are to be congratulated on this self-help afternoon.

The only disappointment: our tame camera man ruined the film he shot of the proceedings.



FRIENDS OF OTTERHAMPTON CP SCHOOL

At a meeting on the evening of 25th November 1974, called by the Managers of Otterhampton County Primary School, at Combwich, a Parents Association was formed. The newly appointed Chairman, Mr N. Kurswell, was immediately authorised by it's members to urge the Somerset Education Authority to speed up the delivery of the caravan classroom expected shortly, which is so badly needed.

The meeting, which was attended by forty parents, was a lively one, and there was an overwhelming vote in favour of forming the "Friends of Otterhampton County Primary School". It was pointed out by various speakers that Combwich, where the School is situated, is a growing village, with a baby being born every few weeks. Some few years ago there was talk of closing the school, but now it's bursting at the seams! More than seventy children are crammed into its inadequate premises. There is no Staff-Room, no Office, the part-time secretary works in one classroom while

the children double up in the next one. There are no private rooms for medical examinations, sick children, or interviews. The children eat their dinners at the tables at which they do their work, and now they have two sittings for dinner which makes more work for the teachers and kitchen staff also. The telephone is in the boys cloakroom! The only place where a door can be shut, and the children excluded!

There is a school house attached to the school, which was redecorated and repaired in the summer, at a cost of £1600. The School Managers have applied for the use of this house to provide the extra facilities that will improve our children's education. They have been turned down flatly as the County want it to house an employee in Education. However, so far no one is willing to pay the rent required for this dark little house, which has so many children, so close! Except the school of course!

We would welcome anyone who could be call "Friend" to join us. The committee consists of Mrs J. Mosedale, Secretary, Mr Ayley, Mrs A.V. Heuch, Mr Loveday and Mrs J. Simms. Subscription 15p per annum.



Soccer

Combwich Soccer Club.
Secretary, Roger Pople.

Not having the most brilliant of seasons, having lost all but one of their 9 matches this season in the Bridgwater and District Sunday League.

Obviously enjoying their football though — and the two dances promoted in the Village Hall have been very successful. Thanks to Mr Speed of Spaxton we have the use — free of charge — of a field in Combwich. More players would help relieve the strain caused by some players working shifts — so if you are interested, why not contact Metford Pople at 35 Riverside.

The November meeting brought another year to a close for our Institute. We were very pleased that it had been such a successful one.

We had had good speakers and also enjoyed the social time. The revival of the "Summer Flower Show" had been well worthwhile. At Group level many of our members won gold and silver stars at the exhibition held at Spaxton, several items going forward to the County Craft Exhibition at Wells. Congratulations to the members concerned. We would welcome anyone who wished to become a member and share our interests and enjoy social time we have together. We meet on the second Thursday in each month at 7.30 pm.

1975 is "National Heritage Year", when we are asked to record any property of historical-interest within our village. If anyone could help with any information, we would be grateful to hear from them.

drama

The Drama Club has been resting in the best theatrical tradition, for the last few months; owing mainly to my personal production, of one delightful daughter!

We intend starting again in the new year. The W.I. have kindly agreed to support us, so we are now the Drama section of the W.I. and will be called "The Combwich W.I. Drama Club". We will meet on Thursdays, except the second Thursday in the month, at the Village Hall, at 7.30 p.m.

No chaps, don't think that this lets you out, we still need men!!! We hope to enter for the W.I. Drama Festival in April 1975. Only twenty minutes acting time, so not too much to learn, but we need at least one young and one middle-aged man for this. If you definitely want a part please phone me as soon as possible. (I'm in the book) Ladies as well please come on Thursday, 16th January 1975, at 7.30 p.m. in the Village Hall. You will find a warm welcome and a lot of fun. Valerie Heuch

PLAYGROUP

It has been a very busy term for the Playgroup. The number of children attending has doubled in the past year and next term there will be twenty on the register.

We have held several successful fund-raising activities during the autumn, including a Fashion Show, a Coffee Morning and selling hot dogs on Bonfire Night.

We will finish for the Christmas holidays with the childrens party on the 19th December.

The Playgroup is held in the Village Hall on Mondays and Thursdays from 10.00—12.00. Next term begins on Thursday, 9th January 1975. Anyone interested whose child will be three next term, please contact:— MRS PERRY, Tel: Combwich 652841, or MRS SIMS, Tel: Combwich 652721.

WARNING — Regular invasions of the Village Hall — Combwich Mums suspected

mother & toddler club

Girls and boys come down to play,
The Village Hall is here to stay.
Mums, leave your washing and leave your chores,
And come with the toddlers to play with the toys.
Come with a shout and come with a call,
And come with the little ones down to the Hall.

A regular invasion of the Village Hall occurs every Tuesday morning at 10.30 a.m., when groups of mischievous toddlers enjoy themselves laughing and screaming, whilst mothers 'stop-up' their ears and have a well earned chat over a cup of hot coffee.

There is a large variety of toys available which range from a see-saw, swing, slide and trundle toys through to the smaller spinning tops, dolls, lego etc. Sometimes we even venture to set up a table and chairs and give a few chosen children paint and paper. (Aprons are provided, but as yet we have no masks or gloves). Little ones can be kept happy either in a playpen or on a foam mattress. At present we only have two very young members, but we hope that two more are coming for Christmas. Its interesting to watch the children develop through the various stages, and also helpful to discuss our 'problems' together. As for the mums the morning isn't just chat, children and coffee, there is the occasional demonstration, cookery or perhaps tupperware, clothing or cosmetics. Bring and Buy Sales are also quite a success, and proceeds are put towards a childrens charity.

We look forward to a special fun and games afternoon nearer Christmas.

So! New mums who have never been to the Mother and Toddlers Club, don't be shy, pop along one morning, we're a friendly lot really!!



Formed in September by Phil Harris, the Club continues to grow steadily. It must be one of the few to function without the aid of a committee — and none the worse for that!

The Hall is a bit low-ceilinged for serious games, but apart from lowering the net and running about on ones knees, the only way to get the extra height we need is to raise the roof.

Representations to Management Committee members requesting this change are met with unwavering stares of incredulity. Perhaps we should suggest digging-up the floor?

Anyway, we meet every Wednesday in the Hall, 7.30 pm until throwing out time. If you fancy your chances as a badminton player, why not join us?



Stewards
SID & LUCY BURROWS
wish all members
A
**VERY MERRY
CHRISTMAS**

A very interesting poster was handed to me by Mr John Fear of Combwich. It is very frail, so to avoid too much handling I have set it out below as it is written. It may be of interest to the older inhabitants, and anyone who has anything old would be welcomed with open arms by me — perhaps we could start a column of by-gone Combwich?

**CANNINGTON & OTTERHAMPTON
SOMERSET**

TO BE SOLD BY AUCTION

By Mess. Hawkes & Son,

By Order of the Trustees, for Sale, under the Will of
William James Coles, Decd.

At the Old Blue Anchor Inn, in Cannington
ON TUESDAY, 31st AUGUST, 1852 at three o'clock in the afternoon

Either together or in the following or such other Lots as
then may be agreed upon, and subject conditions as will
then be produced.

FEE SIMPLE

AND INHERITANCE OF THE MESSUAGE, BUILDINGS, LANDS AND PREMISES,
known by the name of

FENDERHOUSE FARM

Situate and near Combwich, in the Parishes of Cannington
and Otterhampton, containing by the Parochial Surveys.

80A 2R 27P principally

RICH MARSH AND MEADOW LAND

Now in the occupation of MR JOHN HUNT:

and also the reversion in Fee of

A DWELLING HOUSE, OFFICES & COAL-YARD

Containing together 30 perches, very near to
the COMBWITCH PILL, where Coals are landed at a trifling expence.

Here follows details of the land, with such names as Body's
Meadow, South Moor, Little Bolum, Body's Three Acres,
Putnell Orchard, Little Down, Combwich Down, Marsh Land
Horn and quote: *The Reversion in Fee Simple, expectant on
the Deaths of three persons, aged respectively 68, 57 and 47,
of and in a House, Offices and Coal Yard:* unquote.

The poster was printed by S. Cox, Letter-Press and Copper
Copper-Plate printer, Williton.

The property was sold for £210 to Thomas Leigh.



SHOPPING IN THE VILLAGE OVER CHRISTMAS?

W.A. LAWRENCE – CENTRAL STORES

Special opening time Wednesday, 18th December.

18th December 9.00am–1.00pm 4.00–6.00pm

Christmas Eve 9.00am–1.00pm 2.00–8.00pm

Christmas Day CLOSED ALL DAY

Boxing Day CLOSED ALL DAY

27th December CLOSED ALL DAY

28th December 9.00am–1.00pm 2.00–7.00pm

T. REDDING & CO – POST OFFICE & STORES

Christmas Eve SHOP COUNTER

9.00am–1.00pm 2.00–6.00pm

POST OFFICE COUNTER

9.00am–1.00pm

Christmas Day CLOSED ALL DAY

Boxing Day CLOSED ALL DAY

27th December CLOSED ALL DAY

28th December 9.00am–1.00pm 2.00–6.00 pm

New Year's Day CLOSED ALL DAY

HARBOUR GARAGE

Christmas Eve 8.00 am–7.00 pm

Christmas Day CLOSED ALL DAY

Boxing Day 10.00 am–12 noon

27th December 8.30 am–5.30 pm

28th December Normal hours

New Year's Day 8.00 am–1.00 pm



**OPENING HOURS OF VILLAGE HALL BAR
OVER CHRISTMAS**

SOCIAL CLUB BAR – CHRISTMAS OPENING

Christmas Eve – 8.00 pm– 12 midnight

Christmas Day – Lunchtime only

Boxing Day – Lunchtime and 8.00–12 midnight

27th December and 28th December – Normal hours