



Welcome to Combwich

# Otter Tales

Published with the generous support of Otterhampton Parish Council

## Inside this issue

### Page 2 and 3

Otterhampton Offcuts  
from the Parish Council,  
Gig News

### Page 4

OPRA

### Page 5

1st Combwich Fun Day

### Page 6

Louise Bailey - Profile

### Page 7

Rose Coloured Starling  
Art Week- Tom Jacobs

### Pages 8

Miniature Masterpieces

### Page 9

WI Report & notable par-  
ish council minutes.

### Page 10 and 11

WWT Steart Marshes

### Page 12

Village Hall & Harbour View  
Social Club

### Page 13

Village Agent

### Page 14

Harvest Supper, The Anchor,  
Combwich Post Office and  
Stores

### Page 15

Otter Wheels, Short Mat  
Bowls & Pilates

### Page 16

Mobile Library.  
Diary of Events.



Combwich Walking Group and  
friends enjoying a lovely cream  
tea courtesy of Aly and Robin  
Prowse at Dowells Farm. £100  
raised for Steart Church.



A wonderful summer, the hottest on record with  
opportunities for BBQs, cream teas and of course  
the 1st Combwich Fun Day (pictures page 5), but  
also a scorched Common and gardens.



# Otterhampton Offcuts

## Snippets from the August period & September 2018 Parish Council Meetings

### WW1 Centenary Commemorations

We would like to commemorate the WW1 Centenary this year and have decided to purchase a flagpole to fly an appropriate flag. In addition, a resident has offered to make a large wooden poppy to be affixed temporarily to the Welcome Feature post at the entrance to the village along with any names to commemorate if applicable (we will need to research this element). We dismissed the Silhouettes seen in the press, firstly because of somewhere to safely locate them and also because of the £750 cost. A reasonable flagpole would cost around £150 and could be used for future occasions. We need to find an appropriate location to erect a pole and suggest the grassed area opposite the Post Office? **Please let us know your views regarding a possible location.**

### Hinkley Point Community Impact Management (CIM) Fund – Name Change

Our £500k fund which was previously known as CIM funding, will now be called “*The Somerset Community Foundation and the Hinkley Point C Community Fund*” as per the instruction of the Somerset Community Foundation who administer the fund. I suspect we will refer to it commonly as the HPC Community Fund, except for publicising grant funding allocated and in the accounts.

### Highways - Dame Withycombe Hill Layby Widening

This work instigated by the parish council has now been approved by the Somerset Community Foundation Award's Panel. £5000 will be funded from the HPC Community Fund with the remaining £1634 funded by Somerset County Council. We are awaiting a date for works to be carried out.

### 2018 SCC Chairman's Award for Services to the Community



We are delighted to nominate Tina and Mike Gardener for this year's award. Tina has been the main driving force and Chair of the Otterhampton Parish Recreational Association (OPRA) for at least 15 years. Many of you will know that OPRA raises funds so that it can provide events free of charge including the senior citizens four course Christmas Dinner,

Easter Egg hunt, the annual firework display, Christmas Trees for Combach and Steart and also regular grants to various groups in the parish, including £1000 for the shelter in the play area. Mike is often the unseen support in all of these activities. He voluntarily keeps the large Common tidy and mows it throughout the growing season; repairs and maintains a range of equipment owned by OPRA used for fetes and other activities and his compering skills are widely called upon. They also help to organise the monthly village walks.

### Contact details for the parish council

#### PARISH COUNCILLORS

Dave Cather (Chairman)	01278 652570
Dick Best	01278 651063
Barry Leathwood	01278 652399
Bob Birkenhead	01278 653127
Julie Evans (Vice Chair)	01278 652735
Rachel Perrett	01278 652958
Murray Lister	07802 823497
Mrs Aly Prowse (Clerk)	01278 652426
<a href="mailto:otterhamptonpcclerk@gmail.com">otterhamptonpcclerk@gmail.com</a>	

#### County and District Ward Members

Mike Caswell	01278 652043
(District & County)	
Julie Pay (District)	01278 732956

### Avon & Somerset Police - Operation HAROLD (Hinkley Alternative Routes Operating Local Diversions)

Some of you may recall this is the system the Police put into operation on the C182 following a serious incident which temporarily blocks the road. Briefly, depending on where an incident occurs a one-way system will be put into place for all traffic mainly around the minor roads. Following the fatality just outside of Combach earlier in the year, Operation HAROLD was invoked for the first time and it revealed some teething problems which the Police hope to address - including the introduction of text alerts. The Clerk and one other councillor will be notified of an incident so that this information can be cascaded throughout the community via mediums such as Facebook. The existing Op. HAROLD booklet explaining the scheme can be obtained on-line via the Clerk.

### Doctor's branch surgery in Combach

We have been reassured that whilst the branch surgery has ceased, for the foreseeable future prescriptions will continue to be delivered to Combach Post Office on Wednesday afternoons.

### General Data Protection Regulation (GDPR)

As referred to in the previous Otter Tales, our GDPR Privacy notice and amended procedures have been placed on the [combach.org.uk](http://combach.org.uk) website.

### Dog Bins on the Diverted Footpath adjacent to Combach Wharf/Haul Rd

We have received complaints about the overflowing dog bins along the temporary diverted footpath. These are NOT the responsibility of the parish council – we are not sure who placed them there initially. However, we have been made aware that EDF will be

responsible for the footpath once Wessex Water had completed its work. We have therefore, complained to EDF and requested the bins are emptied as a matter of urgency.

### **Dog Walking on WWT Steart Marshes**

Following the concerns raised last year regarding the dog walking restrictions on the Reserve, a compromise has been achieved during meetings between the small focus group set up for this purpose and WWT. Dogs will now be allowed to walk off-lead in more areas, but owners are requested to keep dogs on leads in wildlife sensitive areas only and we would be grateful if dog owners comply with this request. New leaflets and signage identifying the wildlife sensitive areas will be placed around the Reserve shortly.

### **Sedgemoor District Council (SDC) – Local Plan Consultation**

The SDC Local Plan 2011-2032 sets out a new policy framework for future development in the District up to 2032. Following a number of public consultations, the Local Plan was submitted to the Secretary of State on 1.8.17 for examination; comments have now been returned and will once more, be subject to public consultation which will run from 28.8.18 to 10.10.18. The Secretary of State's recommendations can be found via the following link:

[http://www.sedgemoor.gov.uk/media/3368/Sedgemoor-Local-Plan-Proposed-Main-Modifications/pdf/Proposed\\_Main\\_Modification\\_consultation\\_document](http://www.sedgemoor.gov.uk/media/3368/Sedgemoor-Local-Plan-Proposed-Main-Modifications/pdf/Proposed_Main_Modification_consultation_document)

Please advise the Clerk of any issues or concerns you may have regarding the Plan, or alternatively, we will be discussing the Plan (for areas specific to our parish) at the October parish council meeting.

### **Otterhampton Community Plan, Emergency Plan and Welcome Packs**

The existing Community Plan from 2012 has been updated to reflect the changes since 2012 and we have also compiled an Emergency Plan (a new initiative); both are in draft form. The Welcome Pack is in progress. It is a target of our Chairman to have all three completed by 30.4.19. **We will be holding an Open Day event in conjunction with the Village Hall (to view the Hall's refurbishment plan) towards the end of November.** Here we would like residents' views, input and ideas to further enhance the plan and ultimately, our parish. It will also give the opportunity for residents to review the existing Hinkley C Community Fund project list to reflect the revised Plans.

### **Next Meeting**

We would love to see more residents at parish council meetings. You will be given a warm welcome and the opportunity to participate and give your views on the various topics discussed. In addition, tea, coffee and biscuits will be available at future parish council meetings from just before 7pm.



The next parish council meeting will be held on Thursday 4 October 2018, 7.00pm, at Otterhampton Village Hall.

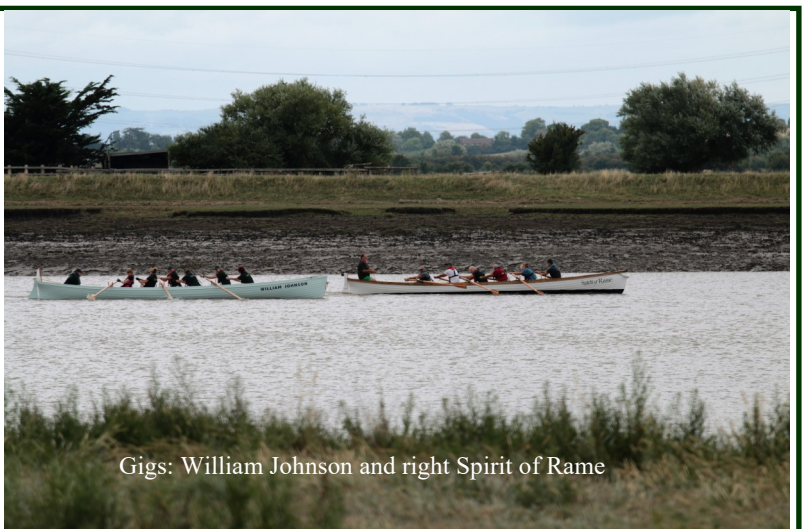
Contact for Clerk [otterhamptonpccclerk@gmail.com](mailto:otterhamptonpccclerk@gmail.com) or Tel 01278 652426

## **Gig News**

Rowing is continuing to grow as a family hobby at Combwich Boat Club with more than 40 new members now enjoying this popular sport. As a result the club is leasing a second boat - a traditional wooden gig called Spirit of Rame. While the lovely summer has made the rowing even more enjoyable, members have continued to turn out in the pouring rain as well! The new boat has meant more rowers can get on the water for longer and also enabled the club to join the Cornish Pilot Gig Association opening up the opportunity to take part in a number of regattas next year.

Spirit is entered into a 17 mile endurance race from Bristol Docks to Clevedon on 13 October and training is well under way for the crew taking part.

The Club now has its own branded rowing kit which promotes both the Club and the village. Anyone wishing to try rowing is welcome to turn up for one of the sessions and have a go.



Gigs: William Johnson and right Spirit of Rame





# Otterhampton Parish Recreation Association (OPRA)

Registered Charity Number 1124017

This long hot summer has been one to remember with record beating temperatures, a real contrast with the bitter cold and snow earlier in the year. For a time it seemed that whatever day you picked for a day out you were guaranteed sunshine. So it was with 1st Combwich Fun Day in July. OPRA supported the event in a variety of ways, but the real credit should go to Sue Barton, who co-ordinated a team of enthusiastic volunteers to make the whole thing a great success (see page 5).

In August the monthly OPRA walk around Steart was followed by a superb cream tea put on by Aly and Robin Prowse who hosted it at their home. A few stalwarts managed to supplement their tea and scones with a liberal dose of cider!

Though Autumn is now upon us we hope for a few more fine days for walks and other activities.

Our Sunday walks will be advertised by email and posters and everyone is welcome to join us, or even lead a walk.

The annual Firework Display on the common will soon be upon us and this year will be held on Sunday 4th November.

Looking even further ahead, our ever-popular Senior's Christmas Dinner will be held on Saturday 1st December. This is a free four course dinner with wine and a great deal of fun. Invites will be sent out to all on our list in November as in previous years. If you are aged 65 years, or over, and live in the parish and not currently on the list and would like to attend, contact Ann on 652399 or one of the committee. If we don't know about you, we can't invite you.

As always, we are looking for ideas for future activities and hopefully people to organise them; if you are interested please contact one of the committee.



*All photographs including the one on the front page are of the Cream Tea event which made £100 for Steart Church. A big thanks to Aly and Robin*

## OPRA Officers and Committee Chair

Tina Gardener 652642

## Secretary

Ann Leathwood 652399

## Treasurer

Sue Francis 653663

## Vice Chair

Barry Leathwood 652399

## Committee

Mary Cornish 653868

Beverly Smith 652595

Di Davie 652141

Felicity Ashworth 653633

Jacqui Sparks 652069

Melvin Fooks 651323

## 100 Club Organisers

Ann Leathwood 652399

Sue Francis 653663

The 100 Club draw takes place every month at the Coffee Morning Otterhampton Village Hall and the winning numbers are displayed in the Post Office and the parish website [www.combwich.org.uk](http://www.combwich.org.uk) shortly afterwards.

If you want to join the 100 Club or become involved in OPRA activities please contact Ann on 652399 or any committee member.





# 1st Combwich Fun Day



The Village Hall Committee, OPRA, Harbour View Club and many volunteers got together to organise the first Combwich Fun Day on Saturday 14<sup>th</sup> July. The weather was perfect – sunny and hot and not a cloud in the sky. There was something for everyone including stalls selling a variety of lovely things, skittles, bowls and golf competitions, nerf guns, biscuit decorating, water into wine, children's races, face painting, ice cream, a tug of war competition, wet sponge throwing, raffles, BBQ, cream teas and a bar. We also had a 3D working model of the Steart wetlands by WWTand the new Combwich Gig, The "William Johnson", shown by members of the Combwich Motor Boat and Sailing Club.

Murray Lister did a great job 'compering' the afternoon and Amber Austin and Pat Priest organised the children's races and tug of war events brilliantly.

We had some lovely prizes donated by local businesses who deserve a mention and thanks. They are: Cannington Walled Gardens, Butlins, ASDA, Sainsburys, Monkton Elm Garden Centre, Scott Cinema, Spice Club Restaurant, Tropiquaria and Hestercombe Gardens. Aly Prowse, Jan Howard, Angie Griffiths and Tina Gardner also kindly donated some prizes.

Special thanks to OPRA for donating £100 to hire the sports equipment and the loan of equipment; Harbour View Club for donating the winners' medals, sweets and wine, Greenway Farm and [John Devlin](#) who donated the sausages and burgers for the BBQ cooked to perfection by Ray and Ann, to Kevin who got incredibly wet and cold from having wet sponges thrown at him, and everyone involved in the making the day very successful.

The profits from the raffles, skittles, BBQ, ice cream, face painting and golf (thank you Tony Payne) totalled an amazing £473.80 which is split evenly between the Village Hall and costs towards another Combwich Fun Day in June/early July 2019. So if you have any ideas for the day or would like to be involved please let anyone on the Village Hall Committee know.



## Louise Bailey - profile



Well known Combwich resident and regular Friday Morning Coffee Clubber Louise Bailey was born into a musical family. Her grandfather was Arnold Dolmetsch, a French/Swiss born pioneer and instrument maker who moved to London in the 1880s. Louise, a fluent French speaker was surrounded by musical members of her family as she was growing up and played the viol amongst other instruments, but her first love was dancing. *(Left aged 4 dancing whilst her grandfather played the harpsichord).*

Her ballet dancing earned her a full-time place at the Saddlers Wells Dance School at the age of 12 and at 17 went on to join the Saddlers Wells Theatre.



*At 19 years and rehearsing below*

Louise performed with the Old Vic Company and toured America with Moira Shearer, a red haired ballerina, and Robert Helpman, famous dancer. He was also the Child Catcher in Chitty Chitty Bang Bang. At the age of 20 Louise met and married John, but went on to perform in the "King and I" in Drury Lane in 1955-6.

Family life and the arrival of their three sons Matt, Peter and Simon meant an end to professional touring and she concentrated on amateur dramatics, teaching dance and bringing up her children. Husband John, an advertising executive, set up a roofing business in the West Country and for several years commuted between their home in Hazelmere and his office in Exeter. During this period Louise, with a friend, set up a successful theatrical costume hire business called Haslemere Wardrobes in Surrey, which is still going today.



In 1981 they moved to a house with a lovely garden in Over Stowey where her love of gardening flourished, helped no doubt by a 3 year course in decorative horticulture at the then Somerset College of Agriculture and Horticulture in Cannington.

For a time they lived in North Petherton before moving to Crossways Farmhouse in Combwich. Sadly John died in 2015 following which Louise moved to her current address in Kiln Close.

Louise still enjoys gardening and painting and is a regular volunteer at the Friday Coffee Club.



As we walk through the village and greet our neighbours, we are usually unaware of the fascinating back stories some of them have. If you have a story you would like to tell, or know someone in the parish with an interesting life story that should be told, then please get in touch. (nothing will be printed without the consent of the person concerned.)



## ROSE-COLOURED STARLING

Saturday June 30<sup>th</sup> saw the twitchers descend on Estuary Park after our birding postie Roger found an adult Rose-coloured Starling (also known as Rosy Starling) whilst delivering the post. A steady stream of admirers arrived during the day from as far afield as Gloucester and Bristol, all were well behaved and many watched the bird from Helen Jowett's garden for which she must be thanked, though the neighbours must have wondered why she had a steady stream of men entering her garden! The Rose-coloured Starling normally breeds in easternmost Europe, Turkey and Kazakhstan, it is an irruptive species and in some years birds move westwards across Europe in search of food. 2018 has been one of these years and large flocks have been seen in countries such as Bulgaria and Cyprus with a few filtering as far west as the UK. It was present for only one day, as is often the case with this species despite plenty of people looking for it on the Sunday.

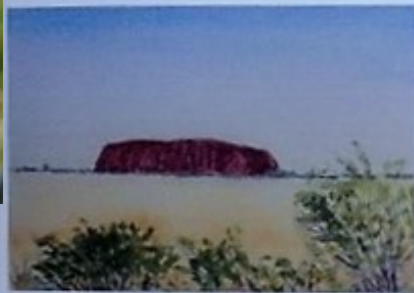


### Tom says

WE are open to everyone from Saturday 15<sup>th</sup> of September until Sunday 30<sup>th</sup> September.

Everyone is very welcome to see a wide variety of Watercolour paintings and see a painter (me) at work, and perhaps have a go.

## Tom Jacobs Venue 30 Somerset Art Weeks Original Watercolours prints & cards From Sydney to The Westcountry



Ayres Rock



Sydney Harbour

You are invited to 8 Church Hill Combswich  
Come and see the artist at work, have techniques demonstrated, and if you are inclined, have a go.

Studio open Tuesday to Sundays for 2 weeks  
11 am to 6 pm 15<sup>th</sup> Sept to 30<sup>th</sup> Sept



Lynmouth



The Towers Combswich



## Miniature Masterpieces... a potted history of model kits by Paul Bradbury Combwich

The urge to create representations of human 'real life' in miniature can be traced back thousands of years to ancient Egypt - delightful wood and clay models of buildings and figures have been discovered in many excavated tombs. By contrast, the modern plastic model kit - known generically in the UK as an 'Airfix Kit' - has been around for a mere 70 years or so but holds a special place in the hearts and memories of many children from the 1950s to the present day. The imagination stimulated when assembling a scale model kit generated an appreciation of the real thing: it was far more than a toy because you had to construct it yourself, to invest time and effort in its creation. Taking part in this hobby is how many youngsters learned about the components of *real* aircraft, cars, ships and spacecraft: how many adult engineers of the following years were inspired by these marvels of miniaturisation?

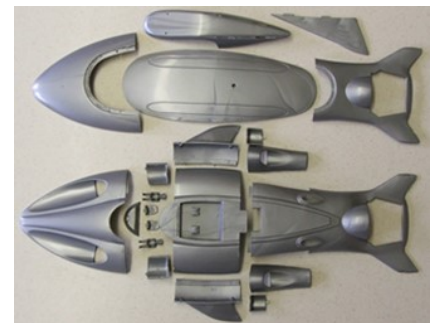
Yet many adults did (and still do) dismiss them as mere toys, failing to appreciate their educational value and the potential generated within the child's mind while sticking bits of plastic together. Patience and perseverance are awakened... problem-solving skills are developed... the urge to research is provoked. An astonishing variety of subjects have been miniaturised as kits, including animals and human figures (complete with all internal organs), clocks, musical instruments, historical figures and transport, missiles and rockets, hovercraft, bicycles, buildings (including a nuclear power plant!) and many others.



**Renewal Visible V8.** Rare 1960 original. This fully working, 1/4 scale V8 engine is probably the pinnacle of educational model kits.



**Eldon Pink Panther TV series car**  
Rare 1960s original 1/25 scale.  
Enhanced Restoration. The Pink Panther character is a Kinder Egg toy.



**Airfix Stingray**  
'Holy Grail' kit from the TV puppet series available only via a 1965 Lyons Maid mail-order offer.

For myself, a favourite aspect of the hobby today is the acquisition of rare and obsolete kits: the ones my parents couldn't have afforded; those of which I was unaware; or the ones I made a mess of all those years ago. The dismantling and restoration of an old, poorly-built but now unavailable kit can be a particularly satisfying, if occasionally frustrating, experience. Some observers may conclude that the motivation behind this is nostalgia - a pining for lost youth - but from my perspective it's more a desire to build/rebuild these long-gone kits with the patience, technique and skills acquired over a lifetime: finally doing justice to these miniature masterpieces.



### **A selection of rare and Holy Grail kits**

Over 3 feet long, the 1963 Renewal Visible Chassis could be combined with the Visible V8 engine kit depicted above.

The 1959 Revell Space Station and XSL-01 Space Ship are Holy Grails and both models of genuine, scientific proposals for space travel. The French Coleoptere experimental aircraft had an aerodynamic body tube to provide lift instead of conventional wings and was issued as a kit by Heller in the 1960s. The Revell X-17 'sounding rocket' paved the way for early satellite launches. The Adams missile transporter helicopter never existed in this configuration.

Many kit manufacturers have fallen by the wayside over the years but often the moulds, or 'tooling', were acquired by other brands and old kits reissued under a different label. Sadly, a considerable number have been lost and will never be available again. The technology exists for 'back-engineering' a kit from the parts of a pristine original - if one can be found - but this is a costly process and sales must justify the outlay. 3D scanning and printing of parts is another avenue under exploration but still in its infancy - current results are a little crude with layered, 'stepped' edges instead of smooth curves. The advent of internet auction sites has provided opportunities for builders to get hold of obsolete models that were unimaginable a few years ago. Indeed, some old and rare kits have achieved 'Holy Grail' status and can raise astonishing final bids on such sites - even as poorly-built examples or just a collection of various parts - *perhaps it's time to dig out those boxes of old model kits lurking in the attic!*

**If you have a hobby or interest you would like to share with us please contact the editor**



## News from Combwich and District WI

Vanessa J Smith (President)

Our **Craft Club** met on **2<sup>nd</sup> July** at Betty Edney's house where we continued making colourful fabric flowers, peonies, roses, daisies, poppies etc. in addition this month we made wired leaves. Our next meeting of the Craft Club will be on Monday **1<sup>st</sup> September**, 1pm – 3pm at Sue Jacobs House when with her tuition we will be 'Iris Folding'!

Our monthly meeting on **19<sup>th</sup> July** was held at **Greenway Farm, Wembdon** for our annual summer '**Eating Out**'. We had a fabulous evening and almost a full compliment of members attending. Sadly our dear Mem Myatt was truly missed at the gathering as she most definitely would have won or been runner up for our competition for '**Best Dressed Lady**' which on this occasion was deservedly won by Carol Thompson who looked very fetching in a gorgeous teal lace, off the shoulder, cat suit. The venue was charming - a cosy and tastefully decorated barn conversion set in lovely grounds with the odd goose or two waddling around! Obviously inquisitive to find out where all the merriment and commotion was coming from!



### Forthcoming meetings:

As there have been **no meetings throughout August** our next monthly meeting will be on **Thursday 20<sup>th</sup> September** when we will be inspired by **Yvonne Bulman** to have a go at **Creative Writing**.

Our next monthly meeting on **18<sup>th</sup> October**, we will be having a **Vintage Quiz** to get the old grey cells working hopefully.

In our Monthly meeting on **15<sup>th</sup> November** we will be welcoming **Tansy Wheeler** who will be demonstrating the art of **Paper Craft**.

### Reasons to join us:

I am happy to report that our membership is steadily growing, however we are still welcoming new members with open arms. Just a reminder that this year, ***the first visit is free***, the second is £3.50 which is refunded when you pay your membership, this stands at £41 and includes a free magazine posted directly to your door and contains a whole range of information and articles, special offers, recipes, craft ideas, competitions and puzzles etc. The annual subscription is pro-rata so you can join any time of the year. Remember our successful monthly Craft Club which we started over a year ago, is also free to members.

Our new Program for 2019 is shaping up to be both varied and exciting, so phone to find out what is on offer!

There are lots of opportunities to go on outings, holidays and entertainment with our **Somerset Federation**, all of which is offered to you in the full colour monthly County News Letter, given at each meeting, so becoming a member of this friendly and supportive women's group is excellent value for money. It is important to note that there is ***absolutely no pressure*** to do anything other than as much as your desire or time allows.

***For more information or to join Combwich & District WI, please do not hesitate to phone Vanessa Johnstone-Smith (President) on 01278 652830 or Brenda Wasley (Secretary) on 01278 446279, we welcome your call.***



## Notable Minutes - Otterhampton Parish Council

- 1904 First mention of sewers in Combwich
- 1919 Proposition for a light railway - taking in Combwich so that this area could be opened up sent to Minister of Transport
- 1924 Minute urging Great Western Railway to build between Bridgwater and Watchet to solve serious unemployment. Such a line would open up the oilshale and cement industries. In the same year a request was made for a fire appliance and a new bridge at Bolham.
- 1948 Application from a Bridgwater man to supply a weekly fish and chips service.
- 1956 Harbourmaster applied to site buoy-yard in the Pill.





# WWT Steart Marshes

working in partnership with

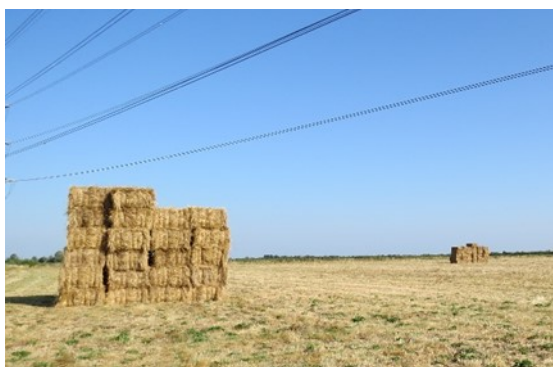


Environment  
Agency

## Management

### Bumper Hay Production – Wetlands are amazing

The long period of hot, dry weather has really illustrated the resilience and value of wetlands during a drought. The water stored on site be it in ditches, ponds or scrapes results in the flowers having a longer season which is hugely beneficial to insects and birds. Not only that but because the species are adapted to extreme conditions the hay yield was up to 10 large bales per acre, an exceedingly high number, whilst a lot of the country is struggling. With this driving the cost of hay up, the wetland system has proven its value to the farmers working on the reserve. Showing once again how wetlands benefit wildlife and people.



*Alongside the fields cut for hay is planted a wild-bird mix which provide additional nectar and seed sources.*

### Water vole Surveys

This month we have started to install water vole rafts in some of the freshwater ditches across the reserve. Using marine plywood and fencing pins to create platforms that the water vole can use as feeding stations or territory markers. We will then survey the rafts for droppings and can map the distribution of water vole across the site.

The water vole is under serious threat from habitat loss and predation by the non-native American mink. Found along our waterways, it is similar-looking to the brown rat, but with a blunt nose, small ears and furry tail.



Colour coded road pin and survey raft – Alice Beaney (WWT)

## Wildlife

August being marked as the month when birds are on the move again after breeding season has finished, saw the arrival of a Spoonbill back on the reserve, again favouring Otterhampton Marsh as a place to feed. 2 Curlew Sandpipers were also spotted in a flock of Dunlin roosting in the lagoon North of the Breach. Large numbers of Yellow Wagtails have also been seen passing over the reserve which is always a pleasure to witness.

Dave Smallshire joined us back on the reserve for another Dragonfly training session to help us identify and record behaviours of species found later in the summer. This included species such as Brown Hawker, Southern Hawker, Ruddy Darter and Small Red-Eyed Damselfly.



Ruddy Darter – Sam Wall (WWT)



### **Exciting Discovery**

We have found pennyroyal (*Mentha pulegium*) for the first time on site. A member of the mint family it has a smell similar to that of spearmint.

Historically it has been used as both a flavouring in cooking and a medicinal herb. It was particularly popular with roman cooks but its use continued throughout the middle ages. Before adding it to your cooking though it should be noted that pennyroyal oil has toxic properties that can be very harmful to humans and is particularly dangerous during pregnancy. This toxicity has its uses though and pennyroyal can be used as an insecticide in mosquito repellent and in flea collars.

If you want to find it for yourself it is by Stockland marsh behind the viewing platforms and is accessible via the permit path.



*Pennyroyal looking stunning at this time of year – Ronan Conn (WWT)*

### **Engagement**

#### **A big 'thank you' to our volunteers**

Here at Steart Marshes we are very reliant on our dedicated team of volunteers. To say thank you we recently took them on a trip to Stowey woods where we learned about the conservation work to replace conifer plantation with native species. There are also plans for natural flood management by creating leaky dams and meanders in the stream, this will increase valuable wetland habitat in the woodland.



*After a Steart related quiz, afternoon tea was enjoyed at the Babbling Brook in Shurton.*

### **Upcoming events:**

**Health walks** – starting Sat 1 Sept and running fortnightly, 11.15-11.45am, free event

Please contact the office for further information or to book a place on 01278 651090 or [Info.steart@wwt.org.uk](mailto:Info.steart@wwt.org.uk)

Please come and talk to me if you have any questions or comments about Steart Marshes. I can be contacted on 01278 651090 / 07717 342061 or email at [nicole.wigley@wwt.org.uk](mailto:nicole.wigley@wwt.org.uk)

Any further queries please don't hesitate to contact the Site Manager, Alys Laver on 01278 651090 / 07717 505966 or email on [alys.laver@wwt.org.uk](mailto:alys.laver@wwt.org.uk)



# OTTERHAMPTON VILLAGE HALL

News from the Otterhampton Village Hall Committee

At long last we can report some progress on the plans to fully refurbish the village hall. An independent survey of Otterhampton parish residents was undertaken in June 2018. There were 102 responses representing 28% which, according to the independent surveyors is a good community response particularly on a single issue consultation. Overwhelmingly the responses stated that the Otterhampton needs a high quality village hall with improved facilities and disability access. The survey findings can be found on the Parish Council website – [combwich.org.uk](http://combwich.org.uk) and on the Otterhampton Village Hall Facebook page.



With the support of the community behind them the Village Hall Committee will now start the long process of applying for planning permission to alter aspects of the existing building. We will hold a public meeting in the near future to show the proposed plans.

Thanks to everyone who completed the questionnaire and particularly to Mr R J Williams who won the £50 prize.

We are planning to hold a quiz night with food in October/November, and to raise money by selling some Christmas cards at the monthly village market so come along and support the village hall please.

If you have any ideas for events or would like to plan something just get in touch with any Committee member or email Sue Barton on [bartonbs@btinternet.com](mailto:bartonbs@btinternet.com) The Hall is available to hire and ideal for parties; arrangements can be made for the Harbour View Club bar to be open. If you would like more information contact Di Davie on 01278 652141 or email her on [dianadavie@hotmail.co.uk](mailto:dianadavie@hotmail.co.uk)



## HARBOUR VIEW SOCIAL CLUB

The Club is open Fridays and Saturdays from 7pm to midnight and Sunday from 2 to 6pm. Annual membership is only £2.50 with £1 charged for visitors. Everyone is welcome so why not come along? The Club has a fully stocked bar including Real Ale and a darts area and skittle alley are available.

The Club held the annual Paella afternoon on August Bank holiday Sunday. Unlike last year's glorious weather it was very windy and rained most of the day so there were a few disasters putting up a gazebo to cook the paella in. Eventually a tent was erected and Richard did a great job cooking a lovely chicken paella and Bruce cooked a vegetarian one.



Lots of people braved the traditional Bank Holiday bad weather and enjoyed the great food followed by a 2 hour gig by the local band The Apalachee Nation in the hall. A great time had by all.





## Notes from your Village Agent

Izzy Silvester



When September comes, the summer fetes end and the regular groups resume. These are a great way to meet people and to share experiences and thoughts. They can be extremely uplifting and can give a great sense of purpose. Most will love extra volunteer support if you have time to give.

Talking Cafes are often held on a Monday to provide much needed company after a long weekend. The Beach Hotel in Minehead has a café every Monday morning from ten o'clock till one and in Bridgwater Arts Centre every Thursday. The Talking café in Williton is the 2<sup>nd</sup> Wednesday of every month from 10.30-12.30. You are sure of a warm welcome where you can come and chat to like-minded people and find support and advice from the agencies who come each week. Another great support is the Active Living groups that run for several hours twice a week. They often provide a subsidised healthy lunch so you can skip the washing up every so often!

Village coffee mornings are wonderful –a great way to meet up with the community and meet chat about local issues. If you are new to the village or are finding it difficult to get the confidence to attend a coffee morning please give me a ring. I can come along with you or arrange for one of your neighbours to tie you for the first time!



There are also gentle exercise groups. You can work on your balance if you are vulnerable to falling, try seated yoga and Tai Chi to stretch muscles and feel peace, seated bowls for fun and gentle exercise and health walks to raise spirits through gentle exercise and conversation.

There are also a network of support groups for those who work as unpaid carers. Here you will find speakers, people who have experience of your needs and a chance for a chuckle.

Perhaps if you drive to a social group, you could consider if there is anyone in your area who can't walk there and give them a lift.

If you struggle to get out of the house, you could receive a weekly telephone call from Age Uk or Silver Line or a visit from the Royal Volunteer Library Service

To find out what is available near you, try your parish magazine, village hall notice boards, [www.somersetcarers.org](http://www.somersetcarers.org) and click on *what's on in your area*, try your local village website or give me a call and I can direct you.

**Not sure who to turn to? Village Agents are a charity that work with individuals and social groups to give confidential support and advice. We can enable people to be more independent in their home, manage personal finances, care for family members and advise on just about anything!**

**Please phone me Izzy Silvester your village agent on 07931 018045, leave me your name and number and I will ring you back. Or e mail me on [izzy@somersetccc.org.uk](mailto:izzy@somersetccc.org.uk) .I do only work part-time so it may take a day or two for me to return your call. Thank you**





**St Peter's Church**

## **HARVEST SUPPER**

**Friday 21st September  
6.30pm at Village Hall**

**Tickets: £8 for 4 courses**

**Call Jacqui and Brian on 652069 to book  
tickets and advise of any special  
dietary requirements.**

**Tickets also available from Post Office.**

## **HARVEST FESTIVAL**

**11.15am  
Sunday  
7th October**



## **THE ANCHOR INN COMBWICH**



### **Starters**

*Prawns in filo pastry and sweet chilli dip £6  
Garlic Toast with Stilton and Mushroom Sauce £5  
Chicken Goujons with Sweet Chilli and Salad £5  
Breaded Whitebait with Bread and Butter £5*

### **Mains**

*Butcher's Ham, Egg and Chips £5  
Beer Battered Cod with Chips and Peas £9  
Scampi with Chips and Peas £9.50  
Vegetable Lasagne with chips Garlic Bread and Salad £9  
Beef Lasagne with chips Garlic Bread and Salad £9.50  
Beef Burger with Salad and Chips £9  
Lamb and Mint Burger with Salad and Chips £9  
Batter Milk Chicken Burger with Salad and Chips £9*

### **Grill**

*Rump steak 8oz £10.50 Rump steak with scampi £14.50  
Gammon steak 10oz £10.50 rump steak 16oz £16.50  
Ribeye 10oz steak £18*

*Sauces: pepper, stilton port and stilton £2.50*

*All steaks come with chips, mushrooms, onion rings, peas and salad*

### **Deals of the week**

*Monday Nights Burgers £5.50  
Wednesday Nights: Steaks from £6.00*

### **Sunday Lunchtimes:**

*Carvery £9.50  
12:30-2:30pm*

*Open 7 nights a week for food and drink*

## **COMBWICH P.O. & STORES**

- Groceries
- Off Licence
- Cards & Stationery
- Post Office

**Family Business  
Established 20 Yrs**

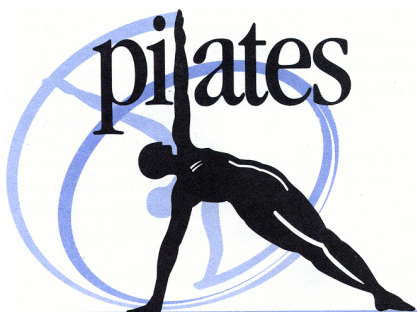


Kevin Dixon facing wet sponges!



*More pictures of the 1st Combwich Fun Day*





Otterhampton School  
will be holding Pilates  
classes for all ages and  
abilities every Tuesday  
evening from 6.30-  
7.30pm.

Pilates is a gentle paced  
class, mainly floor based  
and helps improve core

stability, muscle tone, strength, posture and balance. All of  
which we require our bodies to have to stay healthy,  
whatever our age!

Classes are taught by a qualified and experienced Instructor  
and cost £5 per session. You are welcome to attend and see  
if it suits you before you commit and then payment will be  
required in advance for that term. For anymore information  
please contact

[Callystephens17@icloud.com](mailto:Callystephens17@icloud.com)  
Tel: 07555302145/651214



## Cumbwitch Short Mat Bowls Club

(Established 1987)

First floor Otterhampton Village Hall Combwich.

**New members welcome  
why not come and give it a try**

Mon: 7.15pm for 7.30 > 9.30  
Tel: Brian: 01278 652747

# Otter Wheels

Your local car scheme always there for You

**Is lack of transport a problem?**

**Can't get to the dentist, doctor, hospital, shopping, visit a friend?**

**Ring - Otter Wheels on: 07925 154 216 - but please try to give us 48 hours notice**

This not-for-profit car scheme has been running over two years now, with over 300 journeys to date. If you haven't tried us why not give us a go? Door to door service with friendly experienced drivers all, DBS checked and happy to help.

The rates are reasonable and are per car, not per person and those with a bus pass travel half price.

Typical return journey prices are: -

	With bus pass	Without bus pass
Cannington Health Centre	£2.25	£3.50
Bridgwater Bus station	£4.50	£8.00
Musgrove Hospital Taunton	£10.25	£19.50

**Please note** when you renew your bus pass you must let us have your new number.

**Ring Otter Wheels 07925 154 216 for more information and to book a journey**

**The success of the scheme means we need  
additional drivers. If you are interested please  
ring 07925 154216. Expenses are paid**





### MOBILE LIBRARY

The mobile library visits Combwich and Stockland every four weeks on a Thursday morning . Next visits are 13th September, 11th October and 8th November

Otterhampton School TA5 2QS	10.05 - 10.40
Harbour TA5 2QU	10.55 – 11.15
Combwich Post Office TA5 2QW	11.10 – 11.30
Stockland Bristol Captains TA5 2PY	11.20– 11.40

Please make use of this facility if you can. We have the advantage in Combwich of the school using the mobile library which helps us to retain the service.

If you have an interesting hobby, or interest which you would like to share in these pages, please contact the editor.

And if you would like to receive Otter Tales by email as well as hard copy please email  
barry.leathwood@btinternet.com

Your village website [www.combwich.org.uk](http://www.combwich.org.uk) is the place to go for up to date information on what is happening in the parish and much more. Take a look to see what you have been missing. You can subscribe by adding your email address to the home page to receive email notices of new posts to ensure you don't miss anything.

## DIARY OF EVENTS (Otterhampton Village Hall unless otherwise stated)

REGULAR EVENTS			
Monday	Art Club Brownies Short Mat Bowls	2pm – 4pm 5.45pm - 7.30pm 7.30pm - 9.30pm	
Tuesday	Aerobics Pilates Gentle movement to music	9.30am – 10.30am 10.45 am – 11.45am 12.15pm - 1pm	
Wednesday	Combwich Crafters Short Mat Bowls	10am - 12 noon 7.30pm - 9.30pm	
Thursday (1 <sup>st</sup> of month)	Parish Council	7pm	Starts with public session
Thursday (2 <sup>nd</sup> & 4 <sup>th</sup> of month)	Choir	7pm – 8pm	
Thursday (3 <sup>rd</sup> of month)	Combwich & District WI	7.30pm	Stockland Sports & Social Club
Friday	Coffee morning	10am – 12 noon	
Saturday (2 <sup>nd</sup> of month)	Combwich Market	10am – 12 noon	
Saturday (every week)	Kids Drama Group	11am - 12 noon	
FUTURE EVENTS			
Thursday 4th October	Parish Council Meeting	7pm	Village Hall. Public welcome - tea and biscuits provided
Thursday 1st November	Parish Council meeting	7pm	Village Hall. Public welcome - tea and biscuits provided
<b>Articles 4<sup>th</sup> November 2018</b>	<b>Next Otter Tales</b>		<b>Distribution by 10th November</b>

### Otter Tales

Articles for publication to Barry Leathwood (editor) Tel: 652399, email: barry.leathwood@btinternet.com

Events to Aly Prowse, Tel: 652426 email: otterhamptonpcclerk@gmail.com

Distribution. Bob Birkenhead Tel: 653127, email: bob@combwich.freereserve.co.uk

**Published with the generous support of Otterhampton Parish Council**

Whilst every effort is made to ensure the accuracy of information published in Otter Tales, some of the views expressed are those of individuals or organisations.