



Welcome to Combwich

Otter Tales

Published with the generous support of Otterhampton Parish Council

Inside this issue

Page 1

Village Hall Reopens

Page 2

Parish Council Offcuts

Page 3

Parish Council continued

Page 4

OPPT Consultation Report

Page 5

Village Hall & Harbour View Bar

Page 6

OPRA, Post Office & Lockdown

Page 7

Saga of the Goal Posts

Page 8

Profile - Tim Jones

Page 9

Otterhampton School & Fence line
on Wall Common

Page 10

WWT Steart Marshes

Page 11

WWT Steart Marshes

Page 12

Footsteps of Coleridge

Page 13

Get fishing & Combwich Boat Club
- Gig Section

Page 14

Combwich Wharf Update (EDF)

1st Combwich Brownies

Page 15

Welcome Back. The village hall has reopened with COVID 19 Secure Guidelines in place to keep everyone safe

WE



ARE



OPEN



**Covid 19 is still with us
so please**

Stay Safe

Otterhampton Parish Council

Otterhampton Offcuts

Snippets from your Parish Council during July and August 2020

Brookside Rd – potential housing development

Some of you may recall back in March 2017, Otterhampton Parish Council (OPC) invited residents to its meeting as we had discovered from a Sedgemoor District Council (SDC) newsletter published January 2017 that an ‘opportunity’ for a development of up to 150 houses had been identified during a Strategic Housing Land Availability Assessment (SHLAA) undertaken by SDC during its revision of the Sedgemoor Local Plan. This was on 7 hectares of land behind Brookside Rd and up towards the school. It should be noted that at its subsequent SDC Local Plan drop-in session, SDC indicated that a development of this size would not be permitted as it would be outside of the settlement boundary; any development would have to be proportionate to the size of the village. SDC is the Planning Authority who will make the decision in relation to any application made and OPC will have an opportunity to comment on planning grounds on the specifics of any application. SDC will take those comments into account when it makes its decision. Parish Councillors welcome comments from Parishioners to inform the formal response it gives in due course should a formal planning application proceed.

The March 2017 OPC meeting was well attended by residents. Key points expressed included: -

NEGATIVE - a development of this size would swamp the village of currently some 335 houses; concerns of integrating so many people into the village which could put at risk the community spirit; flood risk to Brookside Rd; risk of further congestion unless adequate parking provided; urbanisation of the rural community; increased traffic on the C182 and at the already busy Combwich junction.

POSITIVE – provision of affordable housing, plus perhaps housing for the elderly; an opportunity to create an additional access to the school – safe cycling, plus reduce traffic through the village; possibility of a new village hall; the addition of more families and residents would hopefully help to sustain the school, pub, village hall, village shop and post office.

These comments were sent to SDC on 10.3.17 and referenced in the May 2019 Parish Community Plan delivered to every household in the parish.

Early summer 2020, OPC was made aware that an outline planning application may be submitted in the next few months for a housing development. You will then have seen the public consultation regarding the funding application for the village hall refurbishment to either progress as per the current plans or whether there was a preference for a new purpose-built village hall SHOULD this option be available through the building of the development



Walsingham Planning (WP) has been appointed to prepare an outline planning application. WP recently made an initial approach to SDC to discuss the policies relevant to the site (as is permitted). SDC encourage developers to engage with parish councils and communities as early as possible. WP then approached OPC requesting an initial discussion. A short introductory “without prejudice” discussion via Zoom was held on 28.8.20. The Chair and the Clerk attended and although no commitment or promises were made by either party, OPC did share some of the negatives and positives (as above) emphasising that these would need to be ratified by the community.

OPC wish to ensure the community is involved at the earliest opportunity so an invitation was made to a Director of WP, to address the parish council at its meeting on 3.9.20 (some members of the public were present as well as the district councillors). He introduced himself and explained the background of WP’s appointment and its role in the process. A development is still in its very early stages so very little detail is available. He did however indicate a willingness to provide more detail to the Parish Council at a future meeting in the not too distant future.

The Parish Council has been pressing SDC to update the Housing Needs Survey for our locality for some time now and it is expected that this may now proceed soon. It is important that if there is to be development of this nature it meets our needs so please make sure that there is a good response to that survey when it drops through your door. Reply even if it is to indicate you have no need.

The Parish Council will as ever make every endeavour to inform and involve the community on all aspects of this and other Parish issues. OPC meetings continue to be held on the first Thursday of each month and are open to the public as usual. We are mindful of current restrictions on gatherings indoors due to Covid-19 and anticipate that these will need to be even more strictly adhered to as we approach the winter months. Accordingly, for now we expect to continue to hold our meetings remotely by Zoom, though it is something we will keep under continual review.

Those Meetings by Zoom are open to the public. Agendas (stating the Zoom meeting ID and password) and minutes will, as usual, be placed on noticeboards and the Combwich.org.uk website, so please do look out for these notifications or contact the Clerk, Aly Prowse 01278 652426, otterhamptonpcclerk@gmail.com for information.

We hope to be able to resume physical meetings at the earliest opportunity but the safety of our Parishioners is our first priority and for now Zoom meetings afford the best opportunity for greatest participation especially as we are aware that some of our more vulnerable parishioners may feel uncomfortable attending a meeting in the Village Hall.

In other news....

Changes to local authority structures

There is currently a change to local government structure in Somerset underway. Our District and County Councillors gave the Parish Council some background information. It would seem that Somerset County Council (SCC) and Sedgemoor District Council (SDC) are in disagreement about whether a Unitary Authority or an East /West split of the county is the best way to administer it. SCC wanting a unitary authority and SDC a split. There will be further consultation about this and the OPC will try to keep abreast of developments but it appears that the final decision will be made by the Secretary of State so by central government.

The Brownie Copse

OPC is looking to work on a Parish Shores Project with Somerset Wildlife. Covid has rather put things on hold but we hope to resurrect discussion about the project soon and will be looking for community involvement in that.

Defibrillators

These have now been received and will be installed towards the end of September, beginning of October. The existing one will be replaced and installed in the BT telephone box. The additional unit will be placed on the accommodation block wall at the Anchor Inn, courtesy of Matt and Charlene who we would like to both acknowledge and thank.



VOLUNTEERS REQUIRED PLEASE

Currently there is a small band of volunteers checking the defibrillator each week. Now we will be having two we are seeking additional volunteers if possible, please. Although a very important role it is neither difficult or onerous to carry out the checks. Standard training will be arranged once the defibrillators are installed. Please contact the Clerk if you are able to help.

Next Parish Council Meeting(s)

The next parish council meetings will be held on Thursday 1 October 2020 and Thursday 5 November at 7.00pm. Venue to be confirmed. (Covid permitting)

Watch this space and look out for OPC meeting minutes which are public documents to keep you up to date on these and other issues. You are more than welcome to join us at meetings and become involved in various local projects and who knows you may find it helps you to discover your inner Parish Councillor before the next election.



Otterhampton Parish Project Team (OPPT)

Community Consultation on Village Hall Refurbishment

Thank you to everyone who responded to the recent consultation which was delivered to every household in the parish. In all we received 83 (23%) responses with 31 supporting the refurbishment plans, 46 in favour of a new build and 6 where there was no clear indication of preference. The results were quite conclusive. The comments received on the forms were welcomed as they outlined the reason for people's preferences and these will be taken into consideration.

New build supporters' comments

Many of those supporting a new building at the entrance of the village referred to better facilities, parking, outdoor space for recreation and a building fit for future generations. Some felt that it would benefit more people. Others thought it would reduce traffic in the village.

Some gave their reasons for supporting a new build was because of the high cost of refurbishing the existing hall which they considered a waste of money and the high maintenance costs would continue. There was support for a limited expenditure on the existing hall until a new hall could be built. One said a maximum of £150k.

Refurbishment supporters' comments

The central position of the current hall was the most popular reason for supporting refurbishment and the uncertainty about the future of a new build. Several referred to the sense of community which could be lost by moving to the entrance of the village. A couple of responders thought the refurbishment costs could be reduced by obtaining more quotes for the work. One thought we have the money now and we should spend it.

General Comments

Acknowledgement and thanks were extended to the Trustees for their hard work with the hall refurbishment plans.

A couple of responses indicated opposition to a large housing development which would change the nature of our "small village"; it may increase traffic in the village and flood plain issues were raised. Whilst all comments were welcome, the community will have the chance to comment on the development once an outline application has been submitted as per the normal planning process.

OPPTs advice to the Parish Council

- a. OPPT are not in support of the Village Hall refurbishment based on the existing proposals
- b. OPPT recommends a more limited proposal to keep the Village Hall operating in a safe and economic way pending more information on the proposed development/outline planning application
- c. OPPT has invited the Trustees to submit a revised bid based on the above recommendations

OPPT was established to develop, lead and coordinate the Hinkley C Community Fund process for Otterhampton Parish. OPPT liaises with the Otterhampton Parish Council and the Somerset Community Foundation (appointed by EDF to administer the Mitigation funding across Somerset). Funding applications are considered against the Community Plan objectives and the Parish Project List.

The constitution requires 9 members of which not more than 2 will be parish councillors.

NEW OPPT MEMBERS NEEDED

(To fill two vacancies)

If you are interested in becoming a member of this team and live in the Otterhampton parish, or require more information please contact Aly Prowse on 652426 or email otterhamptonpcclerk@gmail.com

OTTERHAMPTON VILLAGE HALL

News from the Otterhampton Village Hall Committee



THE PAST



THE PRESENT



THE FUTURE

COVID-19: THE VILLAGE HALL IS NOW OPEN FOR BUSINESS!

The Hall is now open and a few User Groups have returned. Fitness classes with Cally, Pilates with Sharn and the Harbour View Bar are now operating though numbers are restricted. The Friday Coffee morning starts on 4th September with limited seating available and by invitation only please.

The Groups are meeting all the requirements necessary and following Government advice. The Hall is cleaned regularly - and before and after use by each group. Anti-bac gels, cleaning sprays and wipes are available to keep the Hall clean and Covid free. The Village Hall Committee will continue to carefully monitor the situation.

UPDATE ON THE VILLAGE HALL REFURBISHMENT

After several years of hard work the Committee we were very disappointed that our major refurbishment plans were in jeopardy due to possible proposals to build a new housing development in the village which might include a new village hall.

Based on the responses from the questionnaires recently sent to every household the Otterhampton Parish Project Team (OPPT) has rejected our bid for a major refurbishment and asked us to consider a more modest refurbishment of the Hall to make it safe, energy efficient and more welcoming. The Committee is now waiting for revised plans and quotes. A new bid will be submitted to OPPT by the end of September.

We continue to hope that this refurbishment will take place early 2021.

COMBWICH FUN DAY 2020

Unfortunately due to Government restrictions we had to cancel the 3rd Combwich Fun Day.

But, Covid allowing, we will celebrate next year. So if you have any ideas for the Fun Day or want to help with the organisation please contact Amber 01278 652111.



The Harbour View Bar is open for business so why not come along and enjoy a drink and some good company. The Bar area is a little sad looking at the moment as we have moved furniture and ornaments to comply with Government guidelines and make it easier to clean. Numbers are restricted to comply with social distancing but we can overspill into the Hall if necessary.

Harbour View Bar Committee is still looking for up to 2 new members to join the team. The Committee would normally meet once a month and is always looking for fresh ideas to increase membership and promote the Bar. A positive attitude is a must!

We were unable to hold the AGM in May due to lockdown and will be looking to arrange this as soon as it is feasible.

We are also looking to increase our pool of bar staff so if you would like know more please contact Bruce on the number below.

If you would like any more information about joining the Committee or working behind the bar, please call Bruce Barton on 653531, or put your name and contact details in the letter box (please mark for HVB).

The current Committee members are:

Steve Lang (Chair), Marie Beckley (Secretary), Bruce Barton (Treasurer)
Rachel Ingram, Bev Lang, Corby Stansfield, Stuart Stansfield and Heath Bennett



Otterhampton Parish Recreation Association (OPRA)

Registered Charity Number 1124017

Tina Gardener Chair

At this time of the year the OPRA Committee are usually busy planning our winter activities, but Covid 19 has put a spanner in the works. The Fireworks display has had to be cancelled because it is impossible to ensure social distancing and everyone's safety. We know this will be disappointing particularly for the children.



The ever popular Seniors Christmas Dinner which normally hosts around 70 guests has had to be cancelled too. We hope to provide alternative festive opportunities to get together and these will be announced in the November newsletter.

The good news is that we will be erecting the usual village Christmas tree with a switch on of the lights at 5 pm Sunday 6th December and maybe there will be a little something extra for the children that night.

Covid 19 is likely to be with us for some time to come and OPRA like everyone else is having to make adjustments. So please keep safe.

The 100 Club draw usually takes place every month at the Coffee Morning Otterhampton Village Hall and the winning numbers are displayed in the Post Office and the parish website www.combwich.org.uk

If you want to join the 100 Club or become involved in OPRA activities please contact Ann on 652399 or Tina on 652642 or any committee member.

Combwich Post Office and Shop

The shop has been a life saver during these difficult few months with lockdown and other restrictions which are likely to be with us for a long time to come. It has made us realise just how important these local services are. This of course includes the Anchor and the Harbour View Bar and the Friday Coffee Club and much more.

As some sense of "normality" returns it is important to support these local services to ensure they are available for us long into the future.

The opening hours for the Shop and Post Office are: -

Shop

Monday to Friday 9am to 7pm (Closed for lunch 1 – 2pm)

Saturday 9am – 1pm

Post office

Monday to Friday 9am to 5.30pm (Closed for lunch 1pm – 2pm)

Saturday 9am – 1pm



In accordance with government regulations face masks must be worn in the shop

Locked Down

At this time

Submitted by Helen Jowett

Just be careful because people are going crazy from being in lock down!

Actually, I've just been talking about this with the microwave and toaster over a cup of tea and all agreed things are getting bad.

I didn't mention anything to the washing machine as she puts a different spin on everything.

Certainly not to the fridge as he is acting cold and distant. In the end the iron calmed me down as she said everything will be fine, no situation is too pressing.

The Hoover was very unsympathetic - told me to just suck it up, but the fan was more optimistic and hope it would all soon blow over!

The toilet looked a bit flushed when I asked its opinion and didn't say anything but the door knob told me to get a grip.

The Saga of the Goal Posts on Combwich Common

ED From research by Bill Johnson

Anyone for a game of football on the common? You will note that there is only one set of goal post – these were all that were allowed to be erected a few years ago because the common is a Site of Special Scientific Interest (SSI) and other environmental designations as well as a registered village green. It was thought that if two sets were erected and organised football matches took place the common would be damaged.

Combwich Common has been used for recreation and sheep grazing for generations. A very pleasant place to be with a view of the river and on a clear day the Mendip Hills.

It hasn't always been so peaceful. Way back in 1903 the common was the subject of legal action which ended up in the Bridgwater County Court before his honour Judge Beresford and it was all about goalposts.

Combwich was a relatively isolated village in those days. There would not have been any public transport, so recreation was village based. The common was used for recreational purposes, grazing and the wharf. The Combwich Football Club which represented a large part of the village played there and of course they needed goal posts!

These were erected on the Common by the football club but were soon removed by Henry Farthing Leigh, who is described as Merchant of Combwich. He lived in the Towers and owned the brickworks and employed many people from the village. A powerful man.

In response to a threat of legal action these were returned, but shortly afterwards were removed again. As a result William Manchip, Combwich Football Club Captain, decided there was no alternative but to take legal action through the Bridgwater County Court for the return of the two sets of goal posts and to establish the right of villagers to continue playing football on the common.

In the court Mr Leigh through his barrister argued that the football club had no right to erect goal posts because of the need to dig holes and damage the common. In addition to his commoner's rights to graze the common, he claimed he had an ownership entitlement. He argued that the common was part of the Manor of Bere which was owned by Edward Colston (yes, the infamous slave trader) who in 1708 transferred this to the Society of Merchant Venturers, and was in the course of time passed down to the Everard family of Hill House, Otterhampton.

Mr Leigh had purchased grazing rights from Captain Everard and on that basis claimed ownership and the right to remove the goalposts.

Judge Beresford was not impressed and with some humour at the expense of Mr Leigh gave judgement in favour of Mr Manchip of the Combwich Football Club, that the goal posts be returned. As this was a public interest case costs were awarded against Mr Leigh.

(A full account of the court case was published in the Bridgwater Mercury on the 25th March 1903 with a heading "An interesting case from Combwich" and is available on www.combwich.org.uk and the Combwich, Steart & Otterhampton Facebook page)

Combwich Common was registered as a village green (VG – 19, Somerset CC) under the 'Commons Regulation Act 1965' on 8th January 1968 and confirmed following amendments, (Ref No. 32/U/18) on 17th November 1971. Ownership was vested in Otterhampton Parish Council. (The Green is not 'owned' by the community at large)

There are obligations on the Parish Council regarding protection and management of the Village Green and to ensure local inhabitants continue to have a 'Customary right to indulge in – lawful sports and pastimes'.

In addition most of the Village Green at Combwich has been designated as a 'Site of Special Scientific Interest' (SSSI) for which a Site Management Plan has been agreed and in place since March 1998.



Tim Jones - Profile



Tim moved to Combach from Spaxton on Fair Wednesday in 1993. Captivated by the view when he first walked into the brand new house, it is something he has never tired of. Tim already had many friends in the village through work and sport, in particular playing cricket for Bridgwater Doctors against the village team. He knew Nello at the Anchor and also remembers when the landlord of the Ship kept a whole Stilton cheese on the bar.

Tim was born in Swindon and lived in Taunton and Gloucester before moving to Bridgwater, where he attended Dr. Morgan's Grammar School. He left at 16 to be a cub reporter on the Bridgwater Mercury and signed old-fashioned indentures which forbade him entering licensed premises.

He qualified as a senior reporter and joined the Western Gazette as its Bridgwater correspondent around the same time he married Annie. As well as general reporting duties, Tim wrote a weekly column on Somerset cricket. It was during the Botham, Richards and Garner era, so he managed quite a few trips to Lords. He also covered Bridgwater Town FC for a number of newspapers (the Sunday Express carried 80 word match reports in those days) and became a director of the club, organising a trip for the first team and a youth side to Sedgemoor's twin district of Schwalm-Eder in Germany.

While both working, Tim and Annie also ran a small PR company, with local and national clients. He also did a lot of freelance work for regional and national newspapers, as well as writing for magazines on sea angling, fly fishing and other sports.

In the early eighties, Tim joined the Bristol Evening Post, covering Bridgwater, Taunton and eventually the whole of Somerset. His first week saw the big storm which devastated the sea front at Burnham-on-Sea and caused major flooding in many places, including Combach. He was the only journalist to cover the marathon Hinkley Point C Public Inquiry, which he did for a number of media outlets, from start to finish. While with the Post, the newspaper industry became computerised, which brought out huge changes and coupled with the evolution of mobile phones, etc, news started to become "instant".

When he was 40, Tim changed direction and went to work for Avon and Somerset Constabulary as a civilian press and public relations officer. He opened a new police press office in Taunton, then was promoted to work at the brand new headquarters at Portishead. By the time he left in 2000, he was media relations manager in an award-winning department and head of a team of police and civilian press officers. He describes it as a fascinating job that at times involved dealing with media from around the world.

At 50, Tim joined British Energy (now EDF), based at Hinkley Point and Barnwood in Gloucester, but after a few months he was asked to join Magnox, working in press and public relations. He took on media responsibility for 10 Magnox sites in England, Wales and Scotland and became an expert in the media side of emergency nuclear exercises. In 2005, he joined the executive of Magnox South as head of communications for a number of decommissioning sites. He took early retirement aged 59 and admits the last 10 years living in Combach have been the best ever. During this time, the couple have travelled a lot in Europe and twice been on extended visits to Australia.

Tim played cricket for Bridgwater and Wembdon and was a governor at Enmore and Chilton Trinity Schools, where he chaired both PTAs and more recently, spent two years on the Combach Parish Council. The couple have two married children, Dan and Ellie. Tim loves the village and thinks there are few better places to be living, particularly during the current worrying times.



View from the back garden



Otterhampton Primary School.

Spring term highlights

Head Teacher, Claire Luce



Memorial garden for Lisseth.

Children, staff and parents of Otterhampton Primary School have been very busy during the lockdown creating a beautiful memorial garden for Lisseth Buchanan. Lisseth was a much-loved lunchtime supervisor at the school. Unfortunately she passed away in April 2019.

Hours were spent preparing the ground for the generous donations of plants and flowers. On Monday 20th July the garden was formally opened by Lisseth's husband Ray and her son Pablo. Pictured are Ray, Pablo, Carol (Lisseth's sister) and some of the hard-working children involved in making the garden so special.



New fence line on Wall Common

by Dick Best

Recent visitors to Wall Common cannot fail to notice a new fence line to the east end of the Common. The new fence has been instigated by Natural England, the site managers, and funded by Hinkley Point "C". The fence marks the eastern boundary of Wall Common and the western boundary of the Sanctuary Area of the foreshore of Bridgwater Bay National Nature Reserve. It replaces existing fences which, due to the unstable nature of the inter-tidal shore, required frequent and expensive maintenance; the new fence has been designed to a much higher and resilient specification.

The fence has been upgraded to prevent stock grazing on Wall Common straying onto the protected area of the nature reserve causing damage to the habitat and disturbing wildlife, especially, breeding birds, moulting Shelduck and roosting migrant waders. Natural England staff are aware of the disturbance on the foreshore caused to wildlife by walkers and dogs and it is hoped that the fence will help in preserving the nature of the Sanctuary. To illustrate the conservation importance of the foreshore, Ringed Plover, a small wading bird, which, up to ten years ago bred in small numbers on the coast, have steadily decreased each year to 2020 when no pairs have succeeded in holding a territory. The reason for this decline is not clear, habitat changes, predation pressure could be involved but human disturbance must play a significant part.





Engagement by Nicole Turnbull

A quick update that the hides and toilets remain open every day from 9am-4.30pm, but we now have to ask visitors to wear face coverings inside. We continue to work with reduced staff numbers due to furlough, and very few volunteers back on the ground, but despite this have some major projects underway on site. There are habitat improvement works at the northern end and on Otterhampton Marsh which will improve the saline lagoons and create new shingle islands for winter and breeding waders. You may have noticed that the Polden hide has been moved to the river bank, it will be a little longer until the screening has been completed and we are ready to open it as the Parrett hide, but it will definitely be worth the wait for the high tide views.

Planning Permission Granted by Alys Laver

As most of you are aware we have been working on plans for a replacement office that incorporates all the fantastic work you are key in delivering. The team has been residing in porta-cabins since 2014, which was only ever meant to be temporary and are clearly unfit for purpose. Not least for health and safety reasons, being overrun with rats, freezing in winter and unbearably hot in summer.

We submitted our planning application in March, and we couldn't have done it without the support from staff and volunteers in helping to provide the mountain of information required. I was invited to speak to the Planning Committee on Tuesday the 9th June, where I had all of 3 minutes to explain the need for a proper office. The positive feedback received from councillors was mind blowing with many of them being regular visitors and understanding the importance of volunteers and education. We received a unanimous vote to grant the planning.



SOUTH EAST ELEVATION



NORTH EAST ELEVATION



NORTH WEST ELEVATION



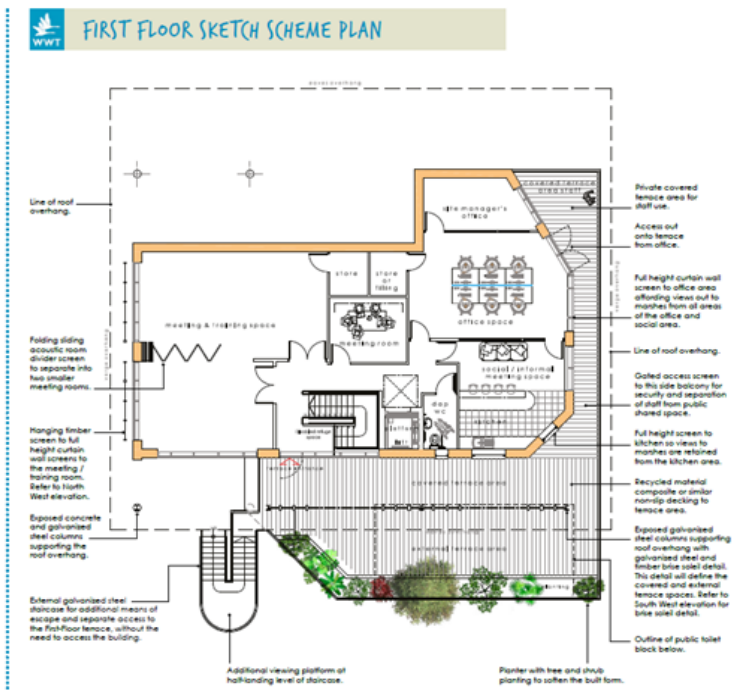
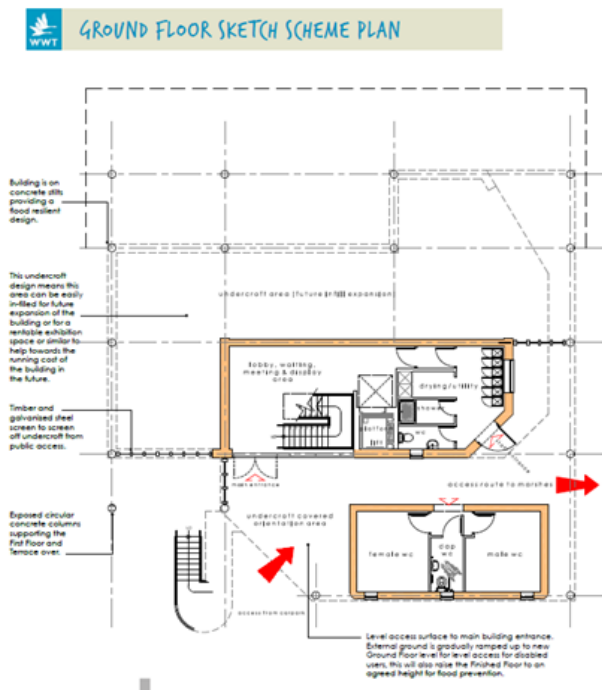
SOUTH WEST ELEVATION

- MATERIAL SCHEDULE:**
- 1 Reinforced concrete frame with circular columns
 - 2 Local random rubble stone walling
 - 3 Lime render wall finish
 - 4 Vertical grain cladding
 - 5 Curved glulam timber beams
 - 6 Sedum / green roof
 - 7 Single ply roof finish
 - 8 Galvanneal steel cladding
 - 9 Galvanneal steel gutters
 - 10 Galvanneal steel columns or prepped bracket supports to large roof overhang
 - 11 Thermally broken aluminium curtain wall screens
 - 12 Thermally broken aluminium windows
 - 13 Larch timber cladding screen (brise soleil) details with exposed galvanneal steel support frame and columns supporting roof overhang to terrace or suspended from the large soft overhang with tension and compression support systems.



SOUTH WEST ELEVATION with brise soleil screen

The placement of the building will be where the toilets currently are. As you can see from the sketches below there will be a designated space that incorporates all the brilliant work, which will raise the morale of staff and volunteers, who will undoubtedly feel more valued. Not having to compromise on space and resources will also allow us all to work more effectively and deliver a much higher quality of engagement



The site has gone from strength to strength and the need for a learning and training space is key to continue the development of our volunteers. In 2019 we clocked nearly 5500 volunteer hours and directly engaged with over 3500 people through events and talks. The heart of Steart is to demonstrate the value of wetlands to people and wildlife with nature based solutions and tackling climate change. To bring around real change, WWT requires support from stakeholders such as politicians and civil servants. With visits from Michael Gove and Rebecca Pow already, a proper office space will enable us to engage with key audiences in a much more professional manner.

We work with all levels of education from local primary schools to Universities; this equated to 1/3 our engagement last year. The provision of an indoor learning area, especially when the weather is bad would add to the experience.

We will remain mindful of the local communities concerns regarding traffic generation. Therefore, there are no plans for a café or shop. We will continue to monitor vehicle and visitor numbers and use this data to inform and review levels of engagement to ensure we are not over promoting the scheme. We would like it to be a space that the local community can utilise as well as ourselves. Now the next mammoth task.....obtaining the funding.

Please contact us if you have any questions or comments about Steart Marshes.

Site Office: 01278 651090 info.steart@wwt.org.uk

Site Manager: Alys Laver 07717 505966 alys.laver@wwt.org.uk

Engagement Officer: Nicole Turnbull 07717 342061 nicole.turnbull@wwt.org.uk

In The Footsteps of Coleridge,



Lynmouth to Nether Stowey in just over 24 hours

A couple of years ago I gave my Dad a map of the 51 mile Coleridge Way for Father's Day. It was given with the idea of completing it with him when I finished my GCSEs in 2021. We decided to bring it forwards as it is such a strange year and we wanted to take the opportunity to raise money for UNICEF.

We set off with a great friend and a really fantastic pit team from Lynmouth on Wednesday July 22nd at just before 10am. We walked through a beautifully sunny Exmoor picking up a stray Collie on the way that we could not shake off until Porlock, 16 miles in. Our fabulous road crew energised us with Pasties and we refilled water before heading onwards to Webbers post and the 20 mile mark. From here we walked into a dimpsy evening and got to our half way point at Cutcombe 25 miles in, not quite the first marathon of the day completed.

With our energy levels heightened with sausage and chips and a change of socks and blisters fully dressed we continued wearing head torches through fields with the eyeshine of hundreds of sheep across Lyre Common, looking for the Coleridge quill sign for the right direction as we went. The remnants of day light left us quickly and we headed forward along bridle paths, roads and lanes in what became hard and long miles buoyed by the supportive messages of friends and people who had kindly donated to our just giving page. Knowing there were people thinking of us as we walked was a real motivator and a fine companion to have. As the night progressed our pace dropped below 2 ½ miles an hour and our legs and feet really started to test our resolve.

Walking East was a great help because we could see the light of dawn coming as we started a long knee jarring decent into Monksilver and a sign pointing out that Nether Stowey was still 14 ½ miles away, this meant we were on 37 miles and my goodness it felt like it. The 3 of us were walking sporadically cheering each other up and at other times walking with a silent resolve to make sure we finished what we started. As the light of the day allowed us to turn off torches we made an error and ended up in Williton and not Sampford Brett – more miles than we needed especially at this time. We picked ourselves up and got back on track, walking, it must be said, in a slightly less spritely manner than the day before. The 24 hour point passed but this did not matter, on we walked with a morning supply of bacon sandwich at Bicknoller. We then passed Alfoxton, back on local tracks and up a thankless Dowsborough before a final walk down to Nether Stowey and our end point.

As we walked for well over 24 hours; over 2 marathons, we talked to each other about the enjoyment of this being less in the present and more in the looking back at a really resilient effort – pushing ourselves beyond known limits and supporting each other along the way. I chose UNICEF because I really believe in their amazing work around the world making the lives of children better in terms of health and education. I set a goal of £750 as this would provide midwife care and equipment for 25 births, and midwifery is a career I am thinking of pursuing. We were spurred on by the many donations that came through the long night as we walked in darkness and this gave me the extra drive and zeal to ensure I reached my distance target even if it was over the 24 hour mark! I feel really proud of what we did and even more so when I look at the amazing support we got from many people who helped us raise over £2000, I would like to thank them all for their very kind generosity.

Our just giving page is still open at <https://www.justgiving.com/fundraising/Millie-Cadmore-Coleridgeway> and any more donations would be more than gratefully welcomed.

Amelia Cadmore

GET FISHING AWARD – A PROGRESSIVE INTRODUCTION TO FISHING

I will be running three FREE progressive ‘GET FISHING AWARD’ sessions at Combwich match lake on the 26th Sep, 10th Oct and 17th Oct. between 9:30am and 11am. These are a little different from the previous sessions because they will obviously be run at a safe social distance and I will be keeping the numbers to a maximum of 10 participants. I am looking for 2 or 3 families that would like to take up fishing and can attend all three dates. Not only will they learn how to fish safely and confidently they will also be able to collect the Get Fishing Award badges (picture attached) Bronze (Have a go), Silver (new angler) and Gold (Angler) badges as I will assess them throughout the 1.5hr sessions. Each family will also receive a FREE Get Fishing book if they attend all three sessions and complete the Gold badge. If anyone would like to book their families place then please email me at dean.asplin@anglingtrust.net. Please only book if you are 100% committed to attending all three sessions as places are limited.



Combwich Boat Club - Gig Section



The Gig Section of Combwich Boat Club are pleased to announce that the gig rowing recommenced from the end of August. We will of course be taking all precautions necessary, as advised by the governing bodies.

We will be welcoming new members in the near future. Please contact Marie Beckley on 07748 154395 for further details.

Combwich Wharf Refurbishment Update



You'll see that works are progressing well on the wharf refurbishment. So far we've finished the welfare facilities, works to the Motor Boat & Sailing Club access road plus elements to protect local nature such as a mammal crossing. We've also put up permanent fencing which will help to reduce noise levels from the site.

Over the last few weeks you may have seen what looks like padding surrounding some of the works. This is actually an acoustic blanket, one of a few measures in place to help reduce the noise impact from the demolition works.

In October you can expect to see piling works begin, involving installing posts into the ground of the Quay at a greater depth than the ones currently in place. This will provide better support for the new Transfer Slab which will take heavy loads. The Transfer Slab is the technical term for the area onto which parts will be offloaded from the barge.

Looking further ahead, we anticipate that the bulk of construction works will be completed by Summer next year. We continue to brief our workforce and any visitors to site that the private access road should be used for the refurbishment site.

You can keep up to date with what's going on at the wharf by signing up to our monthly update. If you are interested, or have any other questions, please call us on 0333 009 7070 or email us hinkley-enquiries@edf-energy.com.

Thank you for your continued patience whilst the wharf refurbishment is completed.

1st Combwich Brownies

During the summer holiday period many of our Brownies have been meeting with each other on a weekly basis via zoom. Our fun activities have included such things as a scavenger hunt, making paper aeroplanes and helicopters, making a pizza in a box and making and tasting 'armpit fudge (much tastier than it sounds - recipe available for anyone who fancies it!) Some of the activities we have done have led to the completion of badges and we were delighted to present the first silver award of our new programme to one of our older Brownies.



We will be rounding off the holiday period with a virtual sleepover courtesy of zoom. The theme is magic and mayhem and we are all looking forward to it.

We are still unable to say when we are going to be able to meet face to face, we await instruction from Girlguiding U.K. and even then we will have to assess the situation carefully. We are permitted to meet in small groups in an outdoor space and we will be doing that soon with a small group of girls who have specific challenges to complete to finish the badges they were working on before lockdown. For the time being however we will be continuing with our weekly meetings on zoom on a Monday evening from September 14th.

If anyone is rising 7 or over and is interested in joining us, please contact Liz Brown 652687 or Karen Barton 652673 for more information.

A little normality returns to the village with the reopening of the play area on 4th July.



And the Anchor reopens after lockdown with an extensive refurbishment and new chef.



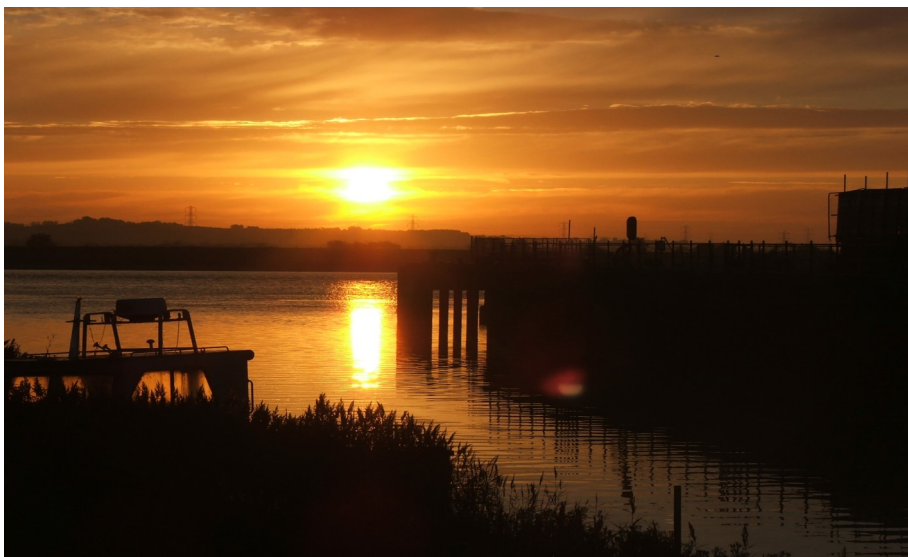
The Friday Coffee Club is open again for the young and not so young!



Agnes celebrates her 91st birthday



Helen and Trish (right) presiding over the first coffee morning since lockdown



A lovely sunrise over the harbour
Photo Paul Bradbury

Maximis
 @ The Anchor Inn
 Combwich

25% Off
 A 3 Course Meal Throughout
 the Whole of September.

Now Taking Bookings for
 Christmas Parties & Christmas Day
Menu Released Shortly.

Join Us For Great Food
 Wed-Fri 5 - 9pm / Sat 12 - 9pm
 Sunday 12 - 4pm


SPECIAL OFFER



Stay Safe

Jam, Marmalade & Chutney

If you are missing the Combwich Market Liz brown has a wide selection of Jam, Chutney and Marmalade for sale at reasonable prices.



Also a good selection of perennial plants ideal for getting into the ground this autumn to establish themselves over the winter ready for flowering next year.

Please note that at the moment all proceeds will go to charity. Phone for more details 652687

Otter Wheels 

Covid 19 update

Please note - essential journeys for medical appointments will be undertaken when no alternative transport is available

Ring 07925 154216

Volunteer drivers urgently needed, for more information ring the above number

Stay Safe

To keep up to date with all that is happening in the parish check the village noticeboards, log on to our own website, www.combwich.org.uk or visit "All Things Combwich" and the "Combwich, Steart and Otterhampton Memories" Facebook Groups

Otter Tales

Articles for publication to Barry Leathwood (editor) Tel: 652399, email: barry.leathwood@btinternet.com
 Events to Aly Prowse, Tel: 652426 email: otterhamptonpcclerk@gmail.com
 Distribution. Bob Birkenhead Tel: 653127, email: birkenhead.bob@gmail.com

Published with the generous support of Otterhampton Parish Council

Whilst every effort is made to ensure the accuracy of information published in Otter Tales, some of the views expressed are those of individuals or organisations.